

LMAN2 Rabbit pAb

货号: **AYP15415**

产品信息

反应	Mouse
宿主	Rabbit
克隆性	Polyclonal
预测反应	
应用	WB IF/ICC
推荐浓度	WB: 1:200 - 1:2000 IF/ICC: 1:50 - 1:200
理论分子量	40kDa
实测分子量	39kDa
形式	Liquid
保存条件	Store at -20°C. Avoid freeze / thaw cycles. Buffer: PBS with 0.01% thiomersal,50% glycerol,pH7.3.
偶联物	Unconjugated
阳性对照	Mouse brain,Mouse heart,Mouse kidney
细胞定位	Endoplasmic reticulum membrane,Endoplasmic reticulum-Golgi intermediate compartment membrane,Golgi apparatus membrane,Single-pass membrane protein,Single-pass type I membrane protein
纯化	Affinity purification

抗原信息

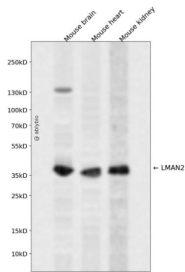
抗原信息	Recombinant fusion protein containing a sequence corresponding to amino acids 190-320 of human LMAN2 (NP_006807.1).
序列	HSKDGRWTELAGCTADFRNRDHDFTFLAVRYSRGRLTVMTDLEDKNEWKNCIDITGVRLPTGYFYGASAGTGDLSDNHDI ISMKLFQLMVEHTPDEESIDWTKIEPSVNFLLKSPKDNVDDPTGNFRSGPLTG

靶点信息

研究背景	This gene encodes a type I transmembrane lectin that shuttles between the endoplasmic reticulum, the Golgi apparatus and the plasma membrane. The encoded protein binds high mannose type glycoproteins and may facilitate their sorting, trafficking and quality control.
基因ID	10960

基因名	LMAN2
Swiss	Q12907
别名	LMAN2;C5orf8;GP36B;VIP36;lectin

产品验证



Western blot analysis of LMAN2 expressed in Mouse brain, Mouse heart, Mouse kidney using LMAN2 Rabbit pAb at 1:1000. Secondary antibody: HRP Goat Anti-Rabbit IgG (H+L) at 1:5000. Lysates/proteins: 30 ug per lane. Blocking buffer: 5% non-fat dry milk in TBST. Detection: ECL Enhanced Kit. Exposure time: 120s.

实验步骤

访问官网浏览详情: www.ablybio.cn