

# SDF4 Rabbit pAb

货号: **AYP15408**

## 产品信息

反应	Human,Mouse
宿主	Rabbit
克隆性	Polyclonal
预测反应	
应用	WB IHC
推荐浓度	<b>WB:</b> 1:200 - 1:2000 <b>IHC:</b> 1:50 - 1:200
理论分子量	15kDa/23kDa/27kDa/30kDa/39kDa/41kDa
实测分子量	40kDa
形式	Liquid
保存条件	Store at -20°C. Avoid freeze / thaw cycles. Buffer: PBS with 0.01% thiomersal,50% glycerol,pH7.3.
偶联物	Unconjugated
阳性对照	DU145,Mouse brain
细胞定位	Cell projection,Cytoplasm,Golgi apparatus lumen,bleb
纯化	Affinity purification

## 抗原信息

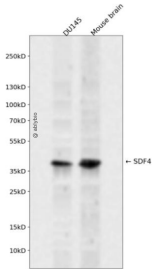
抗原信息	Recombinant fusion protein containing a sequence corresponding to amino acids 37-200 of human SDF4 (NP_057260.2).
序列	RPANHSSTRERVANREENEILPPDHLNGVKLEMDGHLNRGFHQEVFLGKDLGGFDEDAEPRRSRRKLMVIFSKVDVNTD RKISAKEMQRWIMEKTAEHFQEAMEESKTHFRAVDPDGDGHVSWDEYKVKFLASKGHSEKEVADAIRLNEELKVDEETQ EVLENL

## 靶点信息

研究背景	This gene encodes a stromal cell derived factor that is a member of the CREC protein family. The encoded protein contains six EF-hand motifs and calcium-binding motifs. This protein localizes to the Golgi lumen and may be involved in regulating calcium dependent cellular activities.
基因ID	51150

基因名	SDF4
Swiss	Q9BRK5
别名	SDF4;Cab45;SDF-4

## 产品验证



Western blot analysis of SDF4 expressed in DU145, Mouse brain using SDF4 Rabbit pAb at 1:1000. Secondary antibody: HRP Goat Anti-Rabbit IgG (H+L) at 1:5000. Lysates/proteins: 30ug per lane. Blocking buffer: 5% non-fat dry milk in TBST. Detection: ECL Enhanced Kit. Exposure time: 120s.

## 实验步骤

访问官网浏览详情: [www.ablybio.cn](http://www.ablybio.cn)