

OGDHL Rabbit pAb

货号: **AYP15405**

产品信息

反应	Human,Mouse,Rat
宿主	Rabbit
克隆性	Polyclonal
预测反应	
应用	WB IHC
推荐浓度	WB: 1:200 - 1:2000 IHC: 1:50 - 1:200
理论分子量	91kDa/108kDa/114kDa
实测分子量	120kDa
形式	Liquid
保存条件	Store at -20°C. Avoid freeze / thaw cycles. Buffer: PBS with 0.01% thiomersal,50% glycerol,pH7.3.
偶联物	Unconjugated
阳性对照	LO2,Mouse kidney,Mouse brain,Rat kidney
细胞定位	Mitochondrion matrix
纯化	Affinity purification

抗原信息

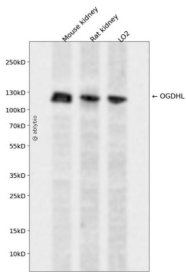
抗原信息	Recombinant fusion protein containing a sequence corresponding to amino acids 1-110 of human OGDHL (NP_060715.2).
序列	MSQLRLLPSRLGVQAARLLAAHDVPVFGWRSRSGPPATFPSSKGGGSSYMEEMYFAWLENPQSVHKSWDSFFREAS EEAFSGSAQPRPPSVVHESRSVSSRTKTSKL

靶点信息

研究背景	The protein encoded by this gene is similar to oxoglutarate dehydrogenase (OGDH) of the OGDH complex , which degrades glucose and glutamate. This gene encodes several isoforms, including some that appear to localize to mitochondria. The encoded protein down-regulates the AKT signaling cascade and can suppress the growth of cervical cancer cells.
基因ID	55753

基因名	OGDHL
Swiss	Q9ULD0
别名	OGDHL

产品验证



Western blot analysis of OGDHL expressed in Mouse kidney,Rat kidney,LO2 using OGDHL Rabbit pAb at 1:1000. Secondary antibody: HRP Goat Anti-Rabbit IgG (H+L) at 1:5000. Lysates/proteins: 30ug per lane. Blocking buffer: 5% non-fat dry milk in TBST. Detection: ECL Enhanced Kit. Exposure time: 120s.

实验步骤

访问官网浏览详情: www.ablybio.cn