

RAPH1 Rabbit pAb

货号: **AYP15401**

产品信息

反应	Human,Mouse,Rat
宿主	Rabbit
克隆性	Polyclonal
预测反应	
应用	WB IF/ICC
推荐浓度	WB: 1:200 - 1:2000 IF/ICC: 1:50 - 1:200
理论分子量	66kDa/67kDa/69kDa/70kDa/72kDa/73kDa/135kDa
实测分子量	200kDa
形式	Liquid
保存条件	Store at -20°C. Avoid freeze / thaw cycles. Buffer: PBS with 0.01% thiomersal,50% glycerol,pH7.3.
偶联物	Unconjugated
阳性对照	SKOV3,HeLa,HepG2,Mouse brain
细胞定位	Cell membrane,Cell projection,Cytoplasm,Cytoplasmic side,Peripheral membrane protein,cytoskeleton,filopodium,lamellipodium
纯化	Affinity purification

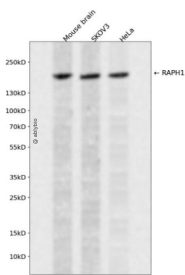
抗原信息

抗原信息	Recombinant fusion protein containing a sequence corresponding to amino acids 1-240 of human RAPH1 (NP_998754.1).
序列	MEQLSDEEIDHGAEEDSDKEDQDLDKMFGAWLGELDKLTQSLDSDKPMEPVKRSPLRQETNMANFSYRFSIYNLNEALN QGETVDLDMADLCSIEQELSSIGSGNSKRQITETKATQKLPVSRHTLKHGTLKGLSSSSNRIAKPSHASYSLDDVTAQL EQASLSMDEAAQQSVLEDTKPLVTNQHRRRTASAGTVSDAEVHSISNSSHSSITSAASSMDSLDDIKVTRPQELDLTHQG Q

靶点信息

研究背景	This gene encodes a protein that belongs to the Mig10/Rap1-interacting adaptor molecule/Lamellipodin family of adapter proteins, which function in cell migration. Members of this family contain pleckstrin-homology domains, Ras-association domains, and proline-rich C-termini. The protein encoded by this gene regulates actin dynamics through interaction with Ena/Vasodilator proteins as well as direct binding to filamentous actin to regulate actin network assembly. Alternative splicing results in multiple transcript variants.
基因ID	65059
基因名	RAPH1
Swiss	Q70E73
别名	RAPH1;ALS2CR18;ALS2CR9;LPD;PREL-2;PREL2;RMO1;RaIGDS/AF-6

产品验证



Western blot analysis of RAPH1 expressed in Mouse brain,SKOV3,HeLa using RAPH1 Rabbit pAb at 1:1000. Secondary antibody: HRP Goat Anti-Rabbit IgG (H+L) at 1:5000. Lysates/proteins: 30ug per lane. Blocking buffer: 5% non-fat dry milk in TBST. Detection: ECL Enhanced Kit. Exposure time: 120s.

实验步骤

访问官网浏览详情: www.ablybio.cn