

GLRA2 Rabbit pAb

货号: **AYP15388**

产品信息

反应	Human,Mouse,Rat
宿主	Rabbit
克隆性	Polyclonal
预测反应	
应用	WB IF/ICC
推荐浓度	WB: 1:500 - 1:1000 IF/ICC: 1:50 - 1:100
理论分子量	42kDa/51kDa/52kDa
实测分子量	52KDa
形式	Liquid
保存条件	Store at -20°C. Avoid freeze / thaw cycles. Buffer: PBS with 0.01% thiomersal,50% glycerol,pH7.3.
偶联物	Unconjugated
阳性对照	U-87MG,A-431,Mouse spinal cord
细胞定位	Cell junction,Cell membrane,Multi-pass membrane protein,postsynaptic cell membrane,synapse
纯化	Affinity purification

抗原信息

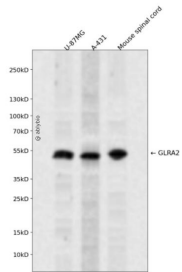
抗原信息	Recombinant fusion protein containing a sequence corresponding to amino acids 350-420 of human GLRA 2 (NP_002054.1).
序列	RLRRRQKRQNKEDVTRESRFNFSGYGMGHCLQVKDGTAVKATPANPLPQPPKDGDAIKKFFVDRAKRIDT

靶点信息

研究背景	The glycine receptor consists of two subunits, alpha and beta, and acts as a pentamer. The protein encoded by this gene is an alpha subunit and can bind strychnine. Several transcript variants encoding different isoforms have been found for this gene.
基因ID	2742

基因名	GLRA2
Swiss	P23416
别名	GLRA2;GLR

产品验证



Western blot analysis of GLRA2 expressed in U-87MG,A-431,Mouse spinal cord using GLRA2 Rabbit pAb at 1:1000. Secondary antibody: HRP Goat Anti-Rabbit IgG (H+L) at 1:5000. Lysates/proteins: 30ug per lane. Blocking buffer: 5% non-fat dry milk in TBST. Detection: ECL Enhanced Kit. Exposure time: 120s.

实验步骤

访问官网浏览详情: www.ablybio.cn