

PHKA1 Rabbit pAb

货号: **AYP15386**

产品信息

反应	Human,Mouse
宿主	Rabbit
克隆性	Polyclonal
预测反应	
应用	WB
推荐浓度	WB: 1:500 - 1:2000
理论分子量	129kDa/135kDa/137kDa
实测分子量	137kDa
形式	Liquid
保存条件	Store at -20°C. Avoid freeze / thaw cycles. Buffer: PBS with 0.01% thiomersal,50% glycerol,pH7.3.
偶联物	Unconjugated
阳性对照	U-87MG,Jurkat,HeLa,Mouse heart
细胞定位	Cell membrane,Cytoplasmic side,Lipid-anchor
纯化	Affinity purification

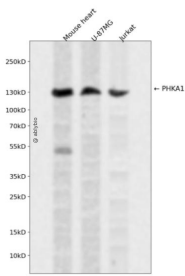
抗原信息

抗原信息	Recombinant fusion protein containing a sequence corresponding to amino acids 600-820 of human PHKA1 (NP_001116142.1).
序列	QTGKLSFLTTSCTHLSFMDPGPEGKLYSEDDNYDYLESIGNWMMNDYDSTSHARCGDEVARYLDHLLAHTAPHPKLA PTSQKGGDLDRFQAAVQTTCDLMSLVTKAKELHVQNVHMYLPTKLFQASRPSFNLLDSPHPRQENQVPSVRVEIHLPRDQS GEVDFKALVLQLKETSSLQEADILYMLYTMKGPDWNTELYNERSATVRELLTELYGKVGEI

靶点信息

研究背景	Phosphorylase kinase is a polymer of 16 subunits, four each of alpha, beta, gamma and delta. The alpha subunit includes the skeletal muscle and hepatic isoforms, and the skeletal muscle isoform is encoded by this gene. The beta subunit is the same in both the muscle and hepatic isoforms, and encoded by one gene. The gamma subunit also includes the skeletal muscle and hepatic isoforms, which are encoded by two different genes. The delta subunit is a calmodulin and can be encoded by three different genes. The gamma subunits contain the active site of the enzyme, whereas the alpha and beta subunits have regulatory functions controlled by phosphorylation. The delta subunit mediates the dependence of the enzyme on calcium concentration. Mutations in this gene cause glycogen storage disease type 9D, also known as X-linked muscle glycogenosis. Alternatively spliced transcript variants encoding different isoforms have been identified in this gene. A pseudogene has been found on chromosome 1.
基因ID	5255
基因名	PHKA1
Swiss	P46020
别名	PHKA1;PHKA

产品验证



Western blot analysis of PHKA1 expressed in Mouse heart,U-87MG,Jurkat using PHKA1 Rabbit pAb at 1:1000. Secondary antibody: HRP Goat Anti-Rabbit IgG (H+L) at 1:5000. Lysates/proteins: 30ug per lane. Blocking buffer: 5% non-fat dry milk in TBST. Detection: ECL Enhanced Kit. Exposure time: 120s.

实验步骤

访问官网浏览详情: www.ablybio.cn