

# TIMM8B Rabbit pAb

货号: **AYP15377**

## 产品信息

反应	Human,Mouse,Rat
宿主	Rabbit
克隆性	Polyclonal
预测反应	
应用	WB IHC IF/ICC
推荐浓度	<b>WB:</b> 1:500 - 1:2000 <b>IHC:</b> 1:50 - 1:100 <b>IF/ICC:</b> 1:50 - 1:100
理论分子量	9kDa
实测分子量	12kDa
形式	Liquid
保存条件	Store at -20°C. Avoid freeze / thaw cycles. Buffer: PBS with 0.01% thiomersal,50% glycerol,pH7.3.
偶联物	Unconjugated
阳性对照	293T,A-549,MCF7,Mouse brain,Mouse kidney,Rat liver
细胞定位	Intermembrane side,Mitochondrion inner membrane,Peripheral membrane protein
纯化	Affinity purification

## 抗原信息

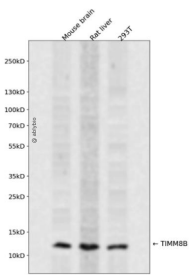
抗原信息	Recombinant fusion protein containing a sequence corresponding to amino acids 16-98 of human TIMM8B (NP_036591.2).
序列	MAELGEADEAELQRLVAAEQKKAQFTAQVHHFMELCWDKCVEKPGNRLDSRTENCLSSCVDRFIDTTLAITSRFAQIVQKGGQ

## 靶点信息

研究背景	This gene encodes a member of a well-conserved family of proteins with similarity to yeast Tim mitochondrial import proteins. This gene is encoded by a nuclear gene and is transported into the intermembrane space of the mitochondrion. When formed into complexes, these proteins guide membrane-spanning proteins across the mitochondrial intermembrane space before they are added into the mitochondrial inner membrane. This gene is adjacent to succinate dehydrogenase, subunit D (SDHD), in which mutations have been found in affected members of families with hereditary paraganglioma.
------	--

基因ID	26521
基因名	TIMM8B
Swiss	Q9Y5J9
别名	TIMM8B;DDP2;TIM8B

## 产品验证



Western blot analysis of TIMM8B expressed in Mouse brain,Rat liver,293T using TIMM8B Rabbit pAb at 1:1000. Secondary antibody: HRP Goat Anti-Rabbit IgG (H+L) at 1:5000. Lysates/proteins: 30ug per lane. Blocking buffer: 5% non-fat dry milk in TBST. Detection: ECL Enhanced Kit. Exposure time: 120s.

## 实验步骤

访问官网浏览详情: [www.ablybio.cn](http://www.ablybio.cn)