

METTL7A Rabbit pAb

货号: **AYP15312**

产品信息

反应	Human,Mouse,Rat
宿主	Rabbit
克隆性	Polyclonal
预测反应	
应用	WB IHC IF/ICC
推荐浓度	WB: 1:500 - 1:2000 IHC: 1:50 - 1:200 IF/ICC: 1:50 - 1:200
理论分子量	28kDa
实测分子量	28kDa
形式	Liquid
保存条件	Store at -20°C. Avoid freeze / thaw cycles. Buffer: PBS with 0.02% sodium azide,50% glycerol,pH7.3.
偶联物	Unconjugated
阳性对照	22Rv1
细胞定位	Endoplasmic reticulum,Lipid droplet,Membrane
纯化	Affinity purification

抗原信息

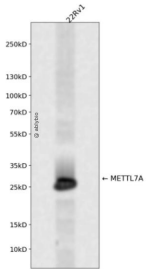
抗原信息	Recombinant fusion protein containing a sequence corresponding to amino acids 30-244 of human METTL7A (NP_054752.3).
序列	WICKKWFYFLVRFTVIYNEQMASKKRELFNLQEFAGPSGKLSLLEVCGGTGANFKFYPPGCRVTCIDPNPNFEKFLIKSIA ENRHLQFERFVVAAGENMHQVADGSVDVVVCTLVLCVKNQERILREVCRVLRPGGAFYFMEHVAAECSTWNYFWQQV LDPAWHLLFDGCNLTRESWKALERASFSLKLQHIQAPLSWELVRPHIYGAVK

靶点信息

研究背景	Probable methyltransferase.
基因ID	25840

基因名	METTL7A
Swiss	Q9H8H3
别名	METTL7A;AAM-B

产品验证



Western blot analysis of METTL7A expressed in 22Rv1 using METTL7A Rabbit pAb at 1:1000. Secondary antibody: HRP Goat Anti-Rabbit IgG (H+L) at 1:5000. Lysates/proteins: 30ug per lane. Blocking buffer: 5% non-fat dry milk in TBST. Detection: ECL Enhanced Kit. Exposure time: 120s.

实验步骤

访问官网浏览详情: www.ablybio.cn