

# SLC9A6 Rabbit pAb

货号: **AYP15311**

## 产品信息

反应	Mouse
宿主	Rabbit
克隆性	Polyclonal
预测反应	
应用	WB
推荐浓度	<b>WB:</b> 1:500 - 1:2000
理论分子量	72kDa/74kDa/77kDa
实测分子量	60kDa
形式	Liquid
保存条件	Store at -20°C. Avoid freeze / thaw cycles. Buffer: PBS with 0.02% sodium azide,50% glycerol,pH7.3.
偶联物	Unconjugated
阳性对照	Mouse lung,Mouse heart,Mouse skeletal muscle
细胞定位	Endosome membrane,Multi-pass membrane protein
纯化	Affinity purification

## 抗原信息

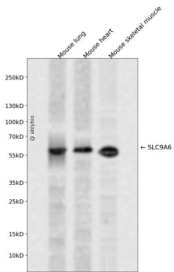
抗原信息	Recombinant fusion protein containing a sequence corresponding to amino acids 542-701 of human SLC9A6 (NP_001036002.1).
序列	VDSDQEHLGVPENERRTTKAESAWLFRMWYNFDHNYLKPLLTHSGPPLTTTLPACCGPIARCLTSPQAYENQEQLKDDDS DLILNDGDISLTYGDSTVNTEPATSSAPRRFMGNSSEDALDRELAFGDHELVIKTRLVLPMDSEPLNLLDNTRHGPA

## 靶点信息

研究背景	This gene encodes a sodium-hydrogen exchanger that is a member of the solute carrier family 9. The encoded protein localizes to early and recycling endosomes and may be involved in regulating endosomal pH and volume. Defects in this gene are associated with X-linked syndromic mental retardation, Christianson type. Alternate splicing results in multiple transcript variants.
基因ID	10479

基因名	SLC9A6
Swiss	Q92581
别名	SLC9A6;MRSA;NHE6

## 产品验证



Western blot analysis of SLC9A6 expressed in Mouse lung, Mouse heart, Mouse skeletal muscle using SLC9A6 Rabbit pAb at 1:1000. Secondary antibody: HRP Goat Anti-Rabbit IgG (H+L) at 1:5000. Lysates/prot eins: 30ug per lane. Blocking buffer: 5% non-fat dry milk in TBST. Detection: ECL Enhanced Kit. Exposure time: 120s.

## 实验步骤

访问官网浏览详情: [www.ablybio.cn](http://www.ablybio.cn)