

EPS15L1 Rabbit pAb

货号: **AYP15303**

产品信息

反应	Human
宿主	Rabbit
克隆性	Polyclonal
预测反应	
应用	WB
推荐浓度	WB: 1:500 - 1:2000
理论分子量	66kDa/83kDa/94kDa/99kDa
实测分子量	110kDa
形式	Liquid
保存条件	Store at -20°C. Avoid freeze / thaw cycles. Buffer: PBS with 0.02% sodium azide,50% glycerol,pH7.3.
偶联物	Unconjugated
阳性对照	MCF7,HepG2,HeLa,BxPC-3,U-251MG
细胞定位	Cell membrane,Membrane,Nucleus,Peripheral membrane protein,coated pit
纯化	Affinity purification

抗原信息

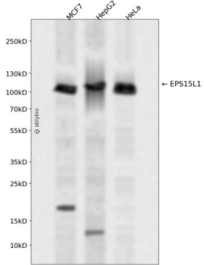
抗原信息	Recombinant fusion protein containing a sequence corresponding to amino acids 475-754 of human EPS15L1 (NP_001245304.1).
序列	QMISSLKTQIQSQESDLKSQEDDLNRAKSELNRLQEEETQLEQSIQAGRVQLETIKSLKSTQDEINQARSKLSQLHESRQE AHRSLQYDQVLDGAHGASLTDLANLSEGVSLAERGSFGAMDDPFKNKALLFSNNTQELHPDPFQTEDPFKSDPFKGD PFKGDPFQNDPFAEQTTSTDPFGGDPFKESDPFRGSATDDFFKKQTKNDPFTSDPFTKNPSLPSKLPFESSDPFSSSS VSSKGSDFPGLDPPFGSGSFNSAEGFADFSQMSKVKVHL

靶点信息

研究背景	Seems to be a constitutive component of clathrin-coated pits that is required for receptor-mediated endocytosis. Involved in endocytosis of integrin beta-1 (ITGB1 and transferrin receptor (TFR; internalization of ITGB1 as DAB2-dependent cargo but not TFR seems to require association with DAB2.
基因ID	58513

基因名	EPS15L1
Swiss	Q9UBC2
别名	EPS15L1;EPS15R

产品验证



Western blot analysis of EPS15L1 expressed in MCF7, HepG2, HeLa using EPS15L1 Rabbit pAb at 1:1000. Secondary antibody: HRP Goat Anti-Rabbit IgG (H+L) at 1:5000. Lysates/proteins: 30ug per lane. Blocking buffer: 5% non-fat dry milk in TBST. Detection: ECL Enhanced Kit. Exposure time: 120s.

实验步骤

访问官网浏览详情: www.ablybio.cn