

FASTKD1 Rabbit pAb

货号: **AYP15287**

产品信息

反应	Human,Mouse,Rat
宿主	Rabbit
克隆性	Polyclonal
预测反应	
应用	WB
推荐浓度	WB: 1:500 - 1:2000
理论分子量	92kDa/97kDa
实测分子量	110kDa
形式	Liquid
保存条件	Store at -20°C. Avoid freeze / thaw cycles. Buffer: PBS with 0.02% sodium azide,50% glycerol,pH7.3.
偶联物	Unconjugated
阳性对照	HepG2,HL-60,H460,MCF7,SW480,Mouse liver,Mouse kidney,Rat liver
细胞定位	Mitochondrion
纯化	Affinity purification

抗原信息

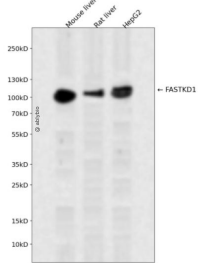
抗原信息	Recombinant fusion protein containing a sequence corresponding to amino acids 638-847 of human FAST KD1 (NP_078898.3).
序列	KFLARLDSQLEILSPRSARVQFHLMELNRSVCLCEPFEQIPWFHDFRCQQYNKGIGGMDGTQQQIFKMLAEVLGGINCV KASVLTPYYHKVDFECILDKRKKPLPYGSHNIALQLPEMPWESNIEIVGSRLPPGAERIALEFLDSKALCRNIPHMKGKSAM KKRHLEILGYRVIQISQFEWNSMALSTKDARMDYLRECFGEVKSC

靶点信息

研究背景	Involved in the down-regulation of mitochondrial MT-ND3 mRNA levels which leads to decreased respiratory complex I abundance and activity.
基因ID	79675

基因名	FASTKD1
Swiss	Q53R41
别名	FASTKD1

产品验证



Western blot analysis of FASTKD1 expressed in Mouse liver,Rat liver,HepG2 using FASTKD1 Rabbit pAb at 1:1000. Secondary antibody: HRP Goat Anti-Rabbit IgG (H+L) at 1:5000. Lysates/proteins: 30ug per lane. Blocking buffer: 5% non-fat dry milk in TBST. Detection: ECL Enhanced Kit. Exposure time: 120s.

实验步骤

访问官网浏览详情: www.ablybio.cn