

CEBPG Rabbit pAb

货号: **AYP15283**

产品信息

| | |
|-------|--|
| 反应 | Human,Mouse |
| 宿主 | Rabbit |
| 克隆性 | Polyclonal |
| 预测反应 | |
| 应用 | WB IHC IF/ICC |
| 推荐浓度 | WB: 1:500 - 1:2000 IHC: 1:50 - 1:200 IF/ICC: 1:50 - 1:100 |
| 理论分子量 | 16kDa |
| 实测分子量 | 16kDa |
| 形式 | Liquid |
| 保存条件 | Store at -20°C. Avoid freeze / thaw cycles. Buffer: PBS with 0.02% sodium azide,50% glycerol,pH7.3. |
| 偶联物 | Unconjugated |
| 阳性对照 | A-549,HT-29,Mouse liver,Mouse testis,Mouse lung |
| 细胞定位 | Nucleus |
| 纯化 | Affinity purification |

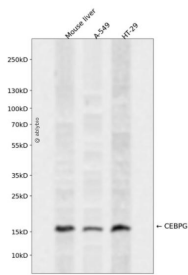
抗原信息

| | |
|------|---|
| 抗原信息 | Recombinant fusion protein containing a sequence corresponding to amino acids 1-150 of human CEBPG (NP_001797.1). |
| 序列 | MSKISQQNSTPGVNGISVIHTQAHASGLQQVPQLVPAGPGGGGKAVAPSKQSKSSPMDRNSDEYRQRRERNMVAVKK SRLKSKQKAQDTLQRVNQLKEENERLEAKIKLLTKELSVLKDLFLEHAHNLADNVQSISTENTTADGDNAGQ |

靶点信息

| | |
|-------|---|
| 研究背景 | The C/EBP family of transcription factors regulates viral and cellular CCAAT/enhancer element-mediated transcription. C/EBP proteins contain the bZIP region, which is characterized by two motifs in the C-terminal half of the protein: a basic region involved in DNA binding and a leucine zipper motif involved in dimerization. The C/EBP family consist of several related proteins, C/EBP alpha, C/EBP beta, C/EBP gamma, and C/EBP delta, that form homodimers and that form heterodimers with each other. CCAAT/enhancer binding protein gamma may cooperate with Fos to bind PRE-I enhancer elements. Two transcript variants encoding the same protein have been found for this gene. |
| 基因ID | 1054 |
| 基因名 | CEBPG |
| Swiss | P53567 |
| 别名 | CEBPG;GPE1BP;IG/EBP-1 |

产品验证



Western blot analysis of CEBPG expressed in Mouse liver,A-549,HT-29 using CEBPG Rabbit pAb at 1:1000. Secondary antibody: HRP Goat Anti-Rabbit IgG (H+L) at 1:5000. Lysates/proteins: 30ug per lane. Blocking buffer: 5% non-fat dry milk in TBST. Detection: ECL Enhanced Kit. Exposure time: 120s.

实验步骤

访问官网浏览详情: www.ablybio.cn