

NAT8B Rabbit pAb

货号: **AYP15280**

产品信息

反应	Human,Mouse,Rat
宿主	Rabbit
克隆性	Polyclonal
预测反应	
应用	WB IHC
推荐浓度	WB: 1:500 - 1:2000 IHC: 1:50 - 1:200
理论分子量	25kDa
实测分子量	25kDa
形式	Liquid
保存条件	Store at -20°C. Avoid freeze / thaw cycles. Buffer: PBS with 0.02% sodium azide,50% glycerol,pH7.3.
偶联物	Unconjugated
阳性对照	Rat brain
细胞定位	Endoplasmic reticulum membrane,Endoplasmic reticulum-Golgi intermediate compartment membrane,Single-pass type II membrane protein
纯化	Affinity purification

抗原信息

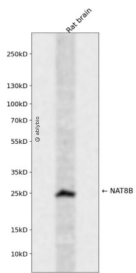
抗原信息	Recombinant fusion protein containing a sequence corresponding to amino acids 75-165 of human NAT8B (NP_057431.2).
序列	WFLAKKPWTRYVDIALRTDMSDITKSYLSECGSCFWVGESEEKVVGTVGALPVDDPTLREKRLQLFHLSVDNEHRGQGIA KALVRTVLQFA

靶点信息

研究背景	
基因ID	51471
基因名	NAT8B

Swiss	Q9UHF3
别名	NAT8B;CML2;Hcml2;NAT8BP

产品验证



Western blot analysis of NAT8B expressed in Rat brain using NAT8B Rabbit pAb at 1:1000. Secondary anti body: HRP Goat Anti-Rabbit IgG (H+L) at 1:5000. Lysates/proteins: 30ug per lane. Blocking buffer: 5% no n-fat dry milk in TBST. Detection: ECL Enhanced Kit. Exposure time: 120s.

实验步骤

访问官网浏览详情: www.ablybio.cn