

— ABLYBIO, Help Your Research



# KLF15 Rabbit pAb

货号: **AYP15279**

## 产品信息

反应	Human
宿主	Rabbit
克隆性	Polyclonal
预测反应	
应用	WB
推荐浓度	<b>WB:</b> 1:500 - 1:2000
理论分子量	43kDa
实测分子量	62KDa
形式	Liquid
保存条件	Store at -20°C. Avoid freeze / thaw cycles. Buffer: PBS with 0.02% sodium azide,50% glycerol,pH7.3.
偶联物	Unconjugated
阳性对照	293T
细胞定位	Nucleus
纯化	Affinity purification

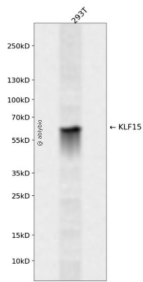
## 抗原信息

抗原信息	Recombinant fusion protein containing a sequence corresponding to amino acids 1-260 of human KLF15 (NP_054798.1).
------	---

## 靶点信息

研究背景	Transcriptional regulator that binds to the GA element of the CLCNKA promoter. Binds to the KCNIP2 promoter and regulates KCNIP2 circadian expression in the heart (By similarity. Is a repressor of CCN2 expression, involved in the control of cardiac fibrosis. It is also involved in the control of cardiac hypertrophy acting through the inhibition of MEF2A and GATA4 (By similarity. Involved in podocyte differentiation (By similarity. Inhibits MYOCD activity. Is a negative regulator of TP53 acetylation. Inhibits NF-kappa-B activation through repression of EP300-dependent RELA acetylation.
基因ID	28999
基因名	KLF15
Swiss	Q9UIH9 ( <a href="https://www.uniprot.org/uniprotkb/Q9UIH9/entry">https://www.uniprot.org/uniprotkb/Q9UIH9/entry</a> )
别名	KLF15, KKLf, KLF15 Rabbit pAb, Kidney-enriched krueppel-like factor

## 产品验证



Western blot analysis of KLF15 expressed in 293T using KLF15 Rabbit pAb at 1:1000. Secondary antibody: HRP Goat Anti-Rabbit IgG (H+L) at 1:5000. Lysates/proteins: 30ug per lane. Blocking buffer: 5% non-fat dry milk in TBST. Detection: ECL Enhanced Kit. Exposure time: 120s.

## 实验步骤

访问官网浏览详情: [www.ablybio.cn](http://www.ablybio.cn) (<https://www.ablybio.cn/www.ablybio.cn>)