

SLC25A20 Rabbit pAb

货号: **AYP15258**

产品信息

反应	Human,Rat
宿主	Rabbit
克隆性	Polyclonal
预测反应	
应用	WB IF/ICC
推荐浓度	WB: 1:100 - 1:500 IF/ICC: 1:50 - 1:200
理论分子量	32kDa
实测分子量	33KDa
形式	Liquid
保存条件	Store at -20°C. Avoid freeze / thaw cycles. Buffer: PBS with 0.05% proclin300,50% glycerol,pH7.3.
偶联物	Unconjugated
阳性对照	T-47D,U2OS,Rat heart
细胞定位	Mitochondrion inner membrane,Multi-pass membrane protein
纯化	Affinity purification

抗原信息

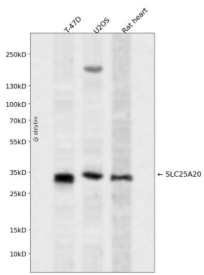
抗原信息	A synthetic peptide corresponding to a sequence within amino acids 1-100 of human SLC25A20 (NP_000378.1).
序列	MADQPKPISPLKNLLAGGFGVCLVFGHPLDVKVRLQTQPPSLPGQPPMYSGTDFDCFRKTLFREGITGLYRGMAAPIIGVTPMFAVCFFGFLGKKLQ

靶点信息

研究背景	This gene product is one of several closely related mitochondrial-membrane carrier proteins that shuttle substrates between cytosol and the intramitochondrial matrix space. This protein mediates the transport of acylcarnitines into mitochondrial matrix for their oxidation by the mitochondrial fatty acid-oxidation pathway. Mutations in this gene are associated with carnitine-acylcarnitine translocase deficiency, which can cause a variety of pathological conditions such as hypoglycemia, cardiac arrest, hepatomegaly, hepatic dysfunction and muscle weakness, and is usually lethal in new born and infants.
------	---

基因ID	788
基因名	SLC25A20
Swiss	O43772
别名	SLC25A20;CAC;CACT

产品验证



Western blot analysis of SLC25A20 expressed in T-47D,U2OS,Rat heart using SLC25A20 Rabbit pAb at 1:1000. Secondary antibody: HRP Goat Anti-Rabbit IgG (H+L) at 1:5000. Lysates/proteins: 30ug per lane. Blocking buffer: 5% non-fat dry milk in TBST. Detection: ECL Enhanced Kit. Exposure time: 120s.

实验步骤

访问官网浏览详情: www.ablybio.cn