

TAF1C Rabbit pAb

货号: **AYP15249**

产品信息

| | |
|-------|--|
| 反应 | Human,Mouse,Rat |
| 宿主 | Rabbit |
| 克隆性 | Polyclonal |
| 预测反应 | |
| 应用 | WB |
| 推荐浓度 | WB: 1:500 - 1:2000 |
| 理论分子量 | 49kDa/58kDa/84kDa/92kDa/95kDa |
| 实测分子量 | 110kDa |
| 形式 | Liquid |
| 保存条件 | Store at -20°C. Avoid freeze / thaw cycles. Buffer: PBS with 0.02% sodium azide,50% glycerol,pH7.3. |
| 偶联物 | Unconjugated |
| 阳性对照 | HeLa,HT-1080,293T,MCF7,Mouse thymus,Mouse eye,Mouse brain |
| 细胞定位 | Nucleus |
| 纯化 | Affinity purification |

抗原信息

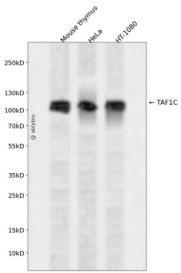
| | |
|------|--|
| 抗原信息 | Recombinant fusion protein containing a sequence corresponding to amino acids 70-320 of human TAF1C (NP_001230085.1). |
| 序列 | PPLLDPWDPGLTARDLLFRGGYRYRKRPRVLDVTEQISRFLLDHGDVAFAPLGKLMLENFKLEGAGSRTKKKTVVSVKKL LQDLGGHQPWGCPWAYLSNRQRRFSILGGPILGTSVASHLAELLHEELVLRWEQLLLDEACTGGALAWVPGRTPQFGQL VYPAGGAQDRLHFQEVVLTSGDNPQFLGKPGRIQLQGPVRQVVTCTVQGETLLAVRSDYHCAVWKFGKQWQPTLLQAM QVEKGATGISLSP |

靶点信息

| | |
|------|--|
| 研究背景 | Initiation of transcription by RNA polymerase I requires the formation of a complex composed of the TATA-binding protein (TBP) and three TBP-associated factors (TAFs) specific for RNA polymerase I. This complex, known as SL1, binds to the core promoter of ribosomal RNA genes to position the polymerase properly and acts as a channel for regulatory signals. This gene encodes the largest SL1-specific TAF. Multiple alternatively spliced transcript variants encoding different isoforms have been identified. |
|------|--|

| | |
|-------|------------------------------------|
| 基因ID | 9013 |
| 基因名 | TAF1C |
| Swiss | Q15572 |
| 别名 | TAF1C;MGC:39976;SL1;TAFI110;TAFI95 |

产品验证



Western blot analysis of TAF1C expressed in Mouse thymus, HeLa, HT-1080 using TAF1C Rabbit pAb at 1:1000. Secondary antibody: HRP Goat Anti-Rabbit IgG (H+L) at 1:5000. Lysates/proteins: 30ug per lane. Blocking buffer: 5% non-fat dry milk in TBST. Detection: ECL Enhanced Kit. Exposure time: 120s.

实验步骤

访问官网浏览详情: www.ablybio.cn