

ENTPD2 Rabbit pAb

货号: **AYP15240**

产品信息

反应	Human
宿主	Rabbit
克隆性	Polyclonal
预测反应	
应用	WB IF/ICC
推荐浓度	WB: 1:500 - 1:2000 IF/ICC: 1:50 - 1:100
理论分子量	48kDa/51kDa/53kDa
实测分子量	48kDa/51kDa/53kDa
形式	Liquid
保存条件	Store at -20°C. Avoid freeze / thaw cycles. Buffer: PBS with 0.02% sodium azide,50% glycerol,pH7.3.
偶联物	Unconjugated
阳性对照	
细胞定位	Cell membrane,Endoplasmic reticulum membrane,Multi-pass membrane protein
纯化	Affinity purification

抗原信息

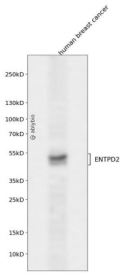
抗原信息	Recombinant fusion protein containing a sequence corresponding to amino acids 28-268 of human ENTDP2 (NP_982293.1).
序列	PTRDVREPPALKYGIVLDAGSSHTSMFIYKWPADKENDTGIVGQHSSCDVPGGGISSYADNPSGASQSLVGCLEQALQD VPKERHAGTPLYLGATAGMRLNLTNPEASTSVLMAVTHLTQYPPDFRGARILSGQEEGVFGWVTANYLLENFIKYGWV GRWFRPRKGTLGAMD LGGASTQITFETTSPAEDRASEVQLHLYGQHYRVYTHSFLCYGRDQVLQRL LASALQTHGFHPC WPR

靶点信息

研究背景	The protein encoded by this gene is the type 2 enzyme of the ecto-nucleoside triphosphate diphosphohydrolase family (E-NTPDase). E-NTPDases are a family of ecto-nucleosidases that hydrolyze 5'-triphosphates. This ecto-ATPase is an integral membrane protein. Alternative splicing of this gene results in multiple transcript variants.
------	--

基因ID	954
基因名	ENTPD2
Swiss	Q9Y5L3
别名	ENTPD2;CD39L1;NTPDase-2

产品验证



Western blot analysis of ENTPD2 expressed in human breast cancer using ENTPD2 Rabbit pAb at 1:1000. Secondary antibody: HRP Goat Anti-Rabbit IgG (H+L) at 1:5000. Lysates/proteins: 30ug per lane. Blocking buffer: 5% non-fat dry milk in TBST. Detection: ECL Enhanced Kit. Exposure time: 120s.

实验步骤

访问官网浏览详情: www.ablybio.cn