

CRHBP Rabbit pAb

货号: **AYP15238**

产品信息

反应	Human,Mouse,Rat
宿主	Rabbit
克隆性	Polyclonal
预测反应	
应用	WB IHC IF/ICC
推荐浓度	WB: 1:500 - 1:2000 IHC: 1:50 - 1:100 IF/ICC: 1:50 - 1:100
理论分子量	36kDa
实测分子量	36kDa
形式	Liquid
保存条件	Store at -20°C. Avoid freeze / thaw cycles. Buffer: PBS with 0.02% sodium azide,50% glycerol,pH7.3.
偶联物	Unconjugated
阳性对照	Rat brain,Rat kidney
细胞定位	Secreted
纯化	Affinity purification

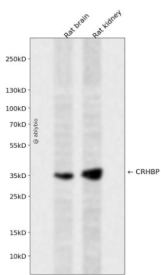
抗原信息

抗原信息	Recombinant fusion protein containing a sequence corresponding to amino acids 25-322 of human CRHBP (NP_001873.2).
序列	YLELREAADYDPFLLFSANLKRELAGEQPYRRALRCLDMLSLQGQFTFTADRPQLHCAAFFISEPEEFITIHVDQVSDCQGG DFLKVFDGWILKGEKFPSSQDHPLPSAERYIDFCESGLSRRSIRSSQNVAMIFFRVHEPENGFTLTIKTDPNLFPCNVISQTP NGKFTLVVPHQHRNCSFSIYPVVIKISDLTLGHVNLQKSSAGCEGIGDFVELLGGTGLDPSKMTPLADLCYPFHGPAQ MKVGCNTVVRMVSSGKHVNRVTFEYRQLEPYELENPNGNSIGEFCLSGL

靶点信息

研究背景	Corticotropin-releasing hormone is a potent stimulator of synthesis and secretion of preopiomelanocortin-derived peptides. Although CRH concentrations in the human peripheral circulation are normally low, they increase throughout pregnancy and fall rapidly after parturition. Maternal plasma CRH probably originates from the placenta. Human plasma contains a CRH-binding protein which inactivates CRH and which may prevent inappropriate pituitary-adrenal stimulation in pregnancy.
基因ID	1393
基因名	CRHBP
Swiss	P24387
别名	CRHBP;CRF-BP;CRFBP

产品验证



Western blot analysis of CRHBP expressed in Rat brain, Rat kidney using CRHBP Rabbit pAb at 1:1000. Secondary antibody: HRP Goat Anti-Rabbit IgG (H+L) at 1:5000. Lysates/proteins: 30ug per lane. Blocking buffer: 5% non-fat dry milk in TBST. Detection: ECL Enhanced Kit. Exposure time: 120s.

实验步骤

访问官网浏览详情: www.ablybio.cn