

ACTC1 Rabbit pAb

货号: AYP15236

产品信息

反应	Human,Mouse,Rat
宿主	Rabbit
克隆性	Polyclonal
预测反应	
应用	WB IHC
推荐浓度	WB: 1:500 - 1:1000 IHC: 1:50 - 1:200
理论分子量	42kDa
实测分子量	42KDa
形式	Liquid
保存条件	Store at -20°C. Avoid freeze / thaw cycles. Buffer: PBS with 0.05% proclin300,50% glycerol,pH7.3.
偶联物	Unconjugated
阳性对照	C2C12,H9C2,RD,Mouse lung,Mouse heart,Rat lung,Rat heart
细胞定位	Cytoplasm,cytoskeleton
纯化	Affinity purification

抗原信息

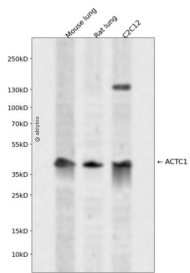
抗原信息	A synthetic peptide corresponding to a sequence within amino acids 1-100 of human ACTC1 (NP_005150.1).
序列	MCDDEETTALVCDNGSGLVKAGFAGDDAPRAVFPISVGRPRHQGVMVGMGQKDSYVGDEAQSQRGILTLKYPIEHGIITNWDDMEKIWHHTFYNELRVAP

靶点信息

研究背景	Actins are highly conserved proteins that are involved in various types of cell motility. Polymerization of globular actin (G-actin) leads to a structural filament (F-actin) in the form of a two-stranded helix. Each actin can bind to four others. The protein encoded by this gene belongs to the actin family which is comprised of three main groups of actin isoforms, alpha, beta, and gamma. The alpha actins are found in muscle tissues and are a major constituent of the contractile apparatus. Defects in this gene have been associated with idiopathic dilated cardiomyopathy (IDC) and familial hypertrophic cardiomyopathy (FHC).
------	--

基因ID	70
基因名	ACTC1
Swiss	P68032
别名	ACTC1;ACTC;ASD5;CMD1R;CMH11;LVNC4;actin

产品验证



Western blot analysis of ACTC1 expressed in Mouse lung,Rat lung,C2C12 using ACTC1 Rabbit pAb at 1:1000. Secondary antibody: HRP Goat Anti-Rabbit IgG (H+L) at 1:5000. Lysates/proteins: 30ug per lane. Blocking buffer: 5% non-fat dry milk in TBST. Detection: ECL Enhanced Kit. Exposure time: 120s.

实验步骤

访问官网浏览详情: www.ablybio.cn