

# H6PD Rabbit pAb

货号: **AYP15234**

## 产品信息

反应	Human,Mouse,Rat
宿主	Rabbit
克隆性	Polyclonal
预测反应	
应用	WB
推荐浓度	<b>WB:</b> 1:500 - 1:2000
理论分子量	88kDa
实测分子量	89kDa
形式	Liquid
保存条件	Store at -20°C. Avoid freeze / thaw cycles. Buffer: PBS with 0.02% sodium azide,50% glycerol,pH7.3.
偶联物	Unconjugated
阳性对照	Mouse liver,Mouse kidney
细胞定位	Endoplasmic reticulum lumen
纯化	Affinity purification

## 抗原信息

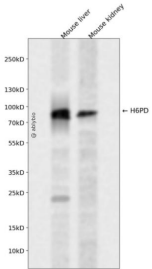
抗原信息	Recombinant fusion protein containing a sequence corresponding to amino acids 20-200 of human H6PD (NP_004276.2).
序列	QELQGHVSIILLGATGDLAKKYLWQGLFQYLDEAGRHSFSFHGAALTAPKQGQELMAKALESLSCPDMAPSHCAEH KDQFLQLSQYRQLKTAEDYQALNKDIEAQLQHAGLREAGRIFYFSVPPFAYEDIARNINSSCRPGPGAWLRVVLEKPFQHD HFSAQQLATELGTFQEEEMY

## 靶点信息

研究背景	There are 2 forms of glucose-6-phosphate dehydrogenase. G form is X-linked and H form, encoded by this gene, is autosomally linked. This H form shows activity with other hexose-6-phosphates, especially galactose-6-phosphate, whereas the G form is specific for glucose-6-phosphate. Both forms are present in most tissues, but H form is not found in red cells.
基因ID	9563

基因名	H6PD
Swiss	O95479
别名	H6PD;CORTRD1;G6PDH;GDH

## 产品验证



Western blot analysis of H6PD expressed in Mouse liver, Mouse kidney using H6PD Rabbit pAb at 1:1000. Secondary antibody: HRP Goat Anti-Rabbit IgG (H+L) at 1:5000. Lysates/proteins: 30ug per lane. Blocking buffer: 5% non-fat dry milk in TBST. Detection: ECL Enhanced Kit. Exposure time: 120s.

## 实验步骤

访问官网浏览详情: [www.ablybio.cn](http://www.ablybio.cn)