

RPL11 Rabbit pAb

货号: **AYP15231**

产品信息

反应	Human,Mouse,Rat
宿主	Rabbit
克隆性	Polyclonal
预测反应	
应用	WB IF/ICC
推荐浓度	WB: 1:500 - 1:2000 IF/ICC: 1:50 - 1:200
理论分子量	20kDa
实测分子量	20kDa
形式	Liquid
保存条件	Store at -20°C. Avoid freeze / thaw cycles. Buffer: PBS with 0.01% thiomersal,50% glycerol,pH7.3.
偶联物	Unconjugated
阳性对照	HepG2,Jurkat,293T,MCF7,Mouse liver,Mouse spleen,Mouse pancreas,Rat liver
细胞定位	Nucleus,nucleolus
纯化	Affinity purification

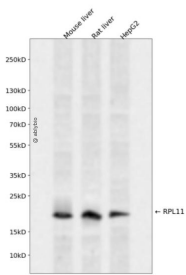
抗原信息

抗原信息	Recombinant fusion protein containing a sequence corresponding to amino acids 1-178 of RPL11 (NP_000966.2).
序列	MAQDQGEKENPMRELRIKRLCLNICVGESGDRLTRAAKVLEQLTGQTPVFSKARYTVRSFGIRRNEKIAVHCTVRGAKAEEI LEKGLKVREYELRKNFSDTGNFGFGIQEHIDLGIKYDPSIGIYGLDFYVVLGRPGFSIADKKRRTGCIGAKHRISKEEAMRW FQQKYDGIILPGK

靶点信息

研究背景	Ribosomes, the organelles that catalyze protein synthesis, consist of a small 40S subunit and a large 60S subunit. Together these subunits are composed of 4 RNA species and approximately 80 structurally distinct proteins. This gene encodes a ribosomal protein that is a component of the 60S subunit. The protein belongs to the L5P family of ribosomal proteins. It is located in the cytoplasm. The protein probably associates with the 5S rRNA. Alternatively spliced transcript variants encoding different isoforms have been found for this gene. As is typical for genes encoding ribosomal proteins, there are multiple processed pseudogenes of this gene dispersed through the genome.
基因ID	6135
基因名	RPL11
Swiss	P62913
别名	RPL11;DBA7;GIG34;L11

产品验证



Western blot analysis of RPL11 expressed in Mouse liver, Rat liver, HepG2 using RPL11 Rabbit pAb at 1:1000. Secondary antibody: HRP Goat Anti-Rabbit IgG (H+L) at 1:5000. Lysates/proteins: 30ug per lane. Blocking buffer: 5% non-fat dry milk in TBST. Detection: ECL Enhanced Kit. Exposure time: 120s.

实验步骤

访问官网浏览详情: www.ablybio.cn