

APEH Rabbit pAb

货号: **AYP15215**

产品信息

反应	Human,Mouse,Rat
宿主	Rabbit
克隆性	Polyclonal
预测反应	
应用	WB IP
推荐浓度	WB: 1:500 - 1:1000 IP: 1:20 - 1:50
理论分子量	81kDa
实测分子量	81KDa
形式	Liquid
保存条件	Store at -20°C. Avoid freeze / thaw cycles. Buffer: PBS with 0.02% sodium azide,50% glycerol,pH7.3.
偶联物	Unconjugated
阳性对照	293T,Jurkat
细胞定位	Cytoplasm
纯化	Affinity purification

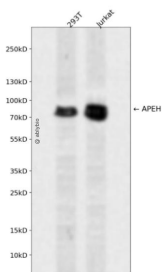
抗原信息

抗原信息	Recombinant fusion protein containing a sequence corresponding to amino acids 1-260 of human APEH (NP_001631.3).
序列	MERQVLLSEPEEAAAALYRGLSRQPALSAACLGPEVTTQYGGQYRTVHTEWTQRDLERMENIRFCRQYLVFHDGDSVVFA GPAGNSVETRGELLSRESPSGTMKAVLRKAGGTGPGEKQFLEVWEKNRKLKSFNLSALEKHGPPVYEDDCFGCLSWSHS ETHLLYVAEKKRPKAESFFQTKALDVSASDDEIARLKKPDQAIKGDQFVYEDWGENMVSKSIPVLCVLDVESGNISVLEG VPENVSPGQAFWAPGDAGVVF

靶点信息

研究背景	This gene encodes the enzyme acylpeptide hydrolase, which catalyzes the hydrolysis of the terminal acetylated amino acid preferentially from small acetylated peptides. The acetyl amino acid formed by this hydrolase is further processed to acetate and a free amino acid by an aminoacylase. This gene is located within the same region of chromosome 3 (3p21) as the aminoacylase gene, and deletions at this locus are also associated with a decrease in aminoacylase activity. The acylpeptide hydrolase is a homotetrameric protein of 300 kDa with each subunit consisting of 732 amino acid residues. It can play an important role in destroying oxidatively damaged proteins in living cells. Deletions of this gene locus are found in various types of carcinomas, including small cell lung carcinoma and renal cell carcinoma.
基因ID	327
基因名	APEH
Swiss	P13798
别名	APEH;AARE;ACPH;APH;D3F15S2;D3S48E;DNF15S2;OPH

产品验证



Western blot analysis of APEH expressed in 293T, Jurkat using APEH Rabbit pAb at 1:1000. Secondary antibody: HRP Goat Anti-Rabbit IgG (H+L) at 1:5000. Lysates/proteins: 30ug per lane. Blocking buffer: 5% non-fat dry milk in TBST. Detection: ECL Enhanced Kit. Exposure time: 120s.

实验步骤

访问官网浏览详情: www.ablybio.cn