

# MBL2 Rabbit pAb

货号: **AYP15211**

## 产品信息

反应	Human,Rat
宿主	Rabbit
克隆性	Polyclonal
预测反应	
应用	WB IHC
推荐浓度	<b>WB:</b> 1:100 - 1:500 <b>IHC:</b> 1:50 - 1:200
理论分子量	26kDa
实测分子量	26KDa
形式	Liquid
保存条件	Store at -20°C. Avoid freeze / thaw cycles. Buffer: PBS with 0.02% sodium azide,50% glycerol,pH7.3.
偶联物	Unconjugated
阳性对照	Mouse serum
细胞定位	Secreted
纯化	Affinity purification

## 抗原信息

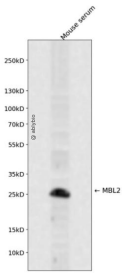
抗原信息	Recombinant fusion protein containing a sequence corresponding to amino acids 21-248 of human MBL2 (NP_000233.1).
序列	ETVTCEDAQKTCPAVIACSSPGINGFPGKDGRDGTGKEKGEPGQGLRGLQGPPGKLGPPGNPSPGSPGPKGQKGD KSPDGDSSLAASERKALQTEMARIKKWLTFSLGKQVGNKFFLTNGEIMTFEKVKALCVKFQASVATPRNAAENGAIQNLIK EEAFLGITDEKTEGQFVDLTGNRLTYTNWNEGEPNNAGSDEDCVLLKNGQWNDVPCSTSHLAVCEFPI

## 靶点信息

研究背景	This gene encodes the soluble mannose-binding lectin or mannose-binding protein found in serum. The protein encoded belongs to the collectin family and is an important element in the innate immune system. The protein recognizes mannose and N-acetylglucosamine on many microorganisms, and is capable of activating the classical complement pathway. Deficiencies of this gene have been associated with susceptibility to autoimmune and infectious diseases.
------	--

基因ID	4153
基因名	MBL2
Swiss	P11226
别名	MBL2;COLEC1;HSMBPC;MBL;MBL2D;MBP;MBP-C;MBP1;MBPD

## 产品验证



Western blot analysis of MBL2 expressed in Mouse serum using MBL2 Rabbit pAb at 1:1000. Secondary antibody: HRP Goat Anti-Rabbit IgG (H+L) at 1:5000. Lysates/proteins: 30ug per lane. Blocking buffer: 5% non-fat dry milk in TBST. Detection: ECL Enhanced Kit. Exposure time: 120s.

## 实验步骤

访问官网浏览详情: [www.ablybio.cn](http://www.ablybio.cn)