

CLCN1 Rabbit pAb

货号: **AYP15206**

产品信息

| | |
|-------|--|
| 反应 | Human,Mouse,Rat |
| 宿主 | Rabbit |
| 克隆性 | Polyclonal |
| 预测反应 | |
| 应用 | WB IHC |
| 推荐浓度 | WB: 1:500 - 1:1000 IHC: 1:50 - 1:200 |
| 理论分子量 | 108kDa |
| 实测分子量 | 109KDa |
| 形式 | Liquid |
| 保存条件 | Store at -20°C. Avoid freeze / thaw cycles. Buffer: PBS with 0.02% sodium azide,50% glycerol,pH7.3. |
| 偶联物 | Unconjugated |
| 阳性对照 | Mouse skeletal muscle |
| 细胞定位 | Membrane,Multi-pass membrane protein |
| 纯化 | Affinity purification |

抗原信息

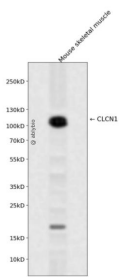
| | |
|------|--|
| 抗原信息 | Recombinant fusion protein containing a sequence corresponding to amino acids 779-988 of human CLCN 1 (NP_000074.2). |
| 序列 | ARPTKKKTTQDSTDLVDNMSPEEIEAWEQEQLSQPVCFDSCCIDQSPFQLVEQTTLHKHTLFLSLLGLHLAYVTSMGKLR GVLALEELQKAIEGHTKSGVQLRPPLASFRNTTSTRKSTGAPPSSAENWNLPEDRPGATGTGDVIAASPETVPVSPSPPEPL SLAPGKVEGELEEELELVESPGLEELADILQGPSLRSTDEEDEDELIL |

靶点信息

| | |
|------|--|
| 研究背景 | The CLCN family of voltage-dependent chloride channel genes comprises nine members (CLCN1-7, Ka and Kb) which demonstrate quite diverse functional characteristics while sharing significant sequence homology. The protein encoded by this gene regulates the electric excitability of the skeletal muscle membrane. Mutations in this gene cause two forms of inherited human muscle disorders: recessive generalized myotonia congenita (Becker) and dominant myotonia (Thomsen). Alternative splicing results in multiple transcript variants. |
|------|--|

| | |
|-------|------------|
| 基因ID | 1180 |
| 基因名 | CLCN1 |
| Swiss | P35523 |
| 别名 | CLCN1;CLC1 |

产品验证



Western blot analysis of CLCN1 expressed in Mouse skeletal muscle using CLCN1 Rabbit pAb at 1:1000. Secondary antibody: HRP Goat Anti-Rabbit IgG (H+L) at 1:5000. Lysates/proteins: 30ug per lane. Blocking buffer: 5% non-fat dry milk in TBST. Detection: ECL Enhanced Kit. Exposure time: 120s.

实验步骤

访问官网浏览详情: www.ablybio.cn