

MSH3 Rabbit pAb

货号: **AYP15204**

产品信息

反应	Human
宿主	Rabbit
克隆性	Polyclonal
预测反应	
应用	WB
推荐浓度	WB: 1:500 - 1:2000
理论分子量	127kDa
实测分子量	127KDa
形式	Liquid
保存条件	Store at -20°C. Avoid freeze / thaw cycles. Buffer: PBS with 0.02% sodium azide,50% glycerol,pH7.3.
偶联物	Unconjugated
阳性对照	SW620
细胞定位	nucleoplasm,nucleus
纯化	Affinity purification

抗原信息

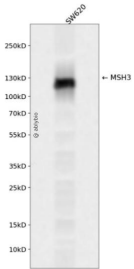
抗原信息	Recombinant fusion protein containing a sequence corresponding to amino acids 617-761 of human MSH 3 (NP_004696.2).
序列	FNTSEEHADMYRSDLNPDLSAELHCWRIKWKHRGKDIELPSTIYEALHLPDIKFFPNVYALLKVLCLPVMKVENERYEN GRKRLKAYLRNLTLDQRSSNLALLNINFDIKHDLMLMVDTYIKLYTSKSELPTDNSETVENT

靶点信息

研究背景	The protein encoded by this gene forms a heterodimer with MSH2 to form MutS beta, part of the post-replicative DNA mismatch repair system. MutS beta initiates mismatch repair by binding to a mismatch and then forming a complex with MutL alpha heterodimer. This gene contains a polymorphic 9 bp tandem repeat sequence in the first exon. The repeat is present 6 times in the reference genome sequence and 3-7 repeats have been reported. Defects in this gene are a cause of susceptibility to endometrial cancer.
基因ID	4437

基因名	MSH3
Swiss	P20585
别名	MSH3;DUP;FAP4;MRP1

产品验证



Western blot analysis of MSH3 expressed in SW620 using MSH3 Rabbit pAb at 1:1000. Secondary antibody: HRP Goat Anti-Rabbit IgG (H+L) at 1:5000. Lysates/proteins: 30ug per lane. Blocking buffer: 5% non-fat dry milk in TBST. Detection: ECL Enhanced Kit. Exposure time: 120s.

实验步骤

访问官网浏览详情: www.ablybio.cn