

PSCA Rabbit pAb

货号: **AYP15201**

产品信息

反应	Human
宿主	Rabbit
克隆性	Polyclonal
预测反应	
应用	WB
推荐浓度	WB: 1:500 - 1:2000
理论分子量	12kDa
实测分子量	18-20KDa
形式	Liquid
保存条件	Store at -20°C. Avoid freeze / thaw cycles. Buffer: PBS with 0.02% sodium azide,50% glycerol,pH7.3.
偶联物	Unconjugated
阳性对照	HeLa,PC-3
细胞定位	Cell membrane,GPI-anchor,Lipid-anchor
纯化	Affinity purification

抗原信息

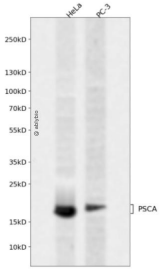
抗原信息	Recombinant fusion protein containing a sequence corresponding to amino acids 12-114 of human PSCA (NP_005663.2).
序列	LLCYSCKAQVSNEDCLQVENCTQLGECWTARIRAVGLLTVISKGCSLNCVDDSQDYVVGKKNITCCDTDLGNASGAHAL QPAAAILALLPALGLLLWGPGQL

靶点信息

研究背景	This gene encodes a glycosylphosphatidylinositol-anchored cell membrane glycoprotein. In addition to being highly expressed in the prostate it is also expressed in the bladder, placenta, colon, kidney, and stomach. This gene is up-regulated in a large proportion of prostate cancers and is also detected in cancers of the bladder and pancreas. This gene includes a polymorphism that results in an upstream start codon in some individuals; this polymorphism is thought to be associated with a risk for certain gastric and bladder cancers. Alternative splicing results in multiple transcript variants.
------	---

基因ID	8000
基因名	
Swiss	O43653
别名	PSCA;PRO232

产品验证



Western blot analysis of PSCA expressed in HeLa,PC-3 using PSCA Rabbit pAb at 1:1000. Secondary antibody: HRP Goat Anti-Rabbit IgG (H+L) at 1:5000. Lysates/proteins: 30ug per lane. Blocking buffer: 5% non-fat dry milk in TBST. Detection: ECL Enhanced Kit. Exposure time: 120s.

实验步骤

访问官网浏览详情: www.ablybio.cn