

PSMF1 Rabbit pAb

货号: **AYP15199**

产品信息

反应	Human,Mouse,Rat
宿主	Rabbit
克隆性	Polyclonal
预测反应	
应用	WB IF/ICC
推荐浓度	WB: 1:500 - 1:2000 IF/ICC: 1:50 - 1:100
理论分子量	29kDa
实测分子量	35kDa
形式	Liquid
保存条件	Store at -20°C. Avoid freeze / thaw cycles. Buffer: PBS with 0.02% sodium azide,50% glycerol,pH7.3.
偶联物	Unconjugated
阳性对照	SW480,A-549,Mouse liver,Mouse testis
细胞定位	Cytoplasm,Endoplasmic reticulum
纯化	Affinity purification

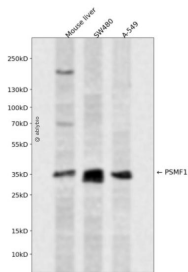
抗原信息

抗原信息	Recombinant fusion protein containing a sequence corresponding to amino acids 1-271 of human PSMF1 (NP_006805.2).
序列	MAGLEVLFAAAPAITCRQDALVCFLHWEVTHGYFGLGVGDQPGPNDKKSELLPAGWNNNKDLYVLRYEYKDGSRKLLVKAITVESSMILNVLEYGSQQVADLTLNLDDYIDAHLGDFHRTYKNSEELRSRIVSGIITPIHEQWEKANVSSPHREFPPATAREVDPLRIPPHHPHTSRQPWCDPLGPFVVGEDLDPFGPRRGGMIVDPLRSGFPRALIDPSSGLPNRLPPGAVPPGARFDPFGPIGTSPPGPNPDHLPPPGYDDMYL

靶点信息

研究背景	The 26S proteasome is a multicatalytic proteinase complex with a highly ordered structure composed of 2 complexes, a 20S core and a 19S regulator. The 20S core is composed of 4 rings of 28 non-identical subunits; 2 rings are composed of 7 alpha subunits and 2 rings are composed of 7 beta subunits. The 19S regulator is composed of a base, which contains 6 ATPase subunits and 2 non-ATPase subunits, and a lid, which contains up to 10 non-ATPase subunits. Proteasomes are distributed throughout eukaryotic cells at a high concentration and cleave peptides in an ATP/ubiquitin-dependent process in a non-lysosomal pathway. An essential function of a modified proteasome, the immunoproteasome, is the processing of class I MHC peptides. This gene encodes a protein that inhibits the activation of the proteasome by the 11S and 19S regulators. Alternative transcript variants have been identified for this gene.
基因ID	9491
基因名	PSMF1
Swiss	Q92530
别名	PSMF1;PI31

产品验证



Western blot analysis of PSMF1 expressed in Mouse liver, SW480, A-549 using PSMF1 Rabbit pAb at 1:1000. Secondary antibody: HRP Goat Anti-Rabbit IgG (H+L) at 1:5000. Lysates/proteins: 30ug per lane. Blocking buffer: 5% non-fat dry milk in TBST. Detection: ECL Enhanced Kit. Exposure time: 120s.

实验步骤

访问官网浏览详情: www.ablybio.cn