

SLC3A1 Rabbit pAb

货号: **AYP15196**

产品信息

反应	Human,Mouse,Rat
宿主	Rabbit
克隆性	Polyclonal
预测反应	
应用	WB IHC
推荐浓度	WB: 1:500 - 1:2000 IHC: 1:50 - 1:200
理论分子量	35kDa/45kDa/46kDa/57kDa/63kDa/65kDa/78kDa
实测分子量	79kDa
形式	Liquid
保存条件	Store at -20°C. Avoid freeze / thaw cycles. Buffer: PBS with 0.02% sodium azide,50% glycerol,pH7.3.
偶联物	Unconjugated
阳性对照	HT-29,HepG2,293T,BxPC-3,PC-12,Mouse liver
细胞定位	Membrane,Single-pass type II membrane protein
纯化	Affinity purification

抗原信息

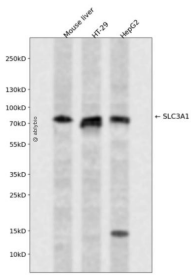
抗原信息	Recombinant fusion protein containing a sequence corresponding to amino acids 416-685 of human SLC3 A1 (NP_000332.2).
序列	LDTVSGNSVYEVITSWMENMPEGKWPWNMIGGPDSSRLTSRLGNQYVNVNMNMLLFTLPGTPITYYGEEIGMGNIVAANL NESYDINTLRKSPMQWDNSSNAGFSEASNTWLPTNSDYHTVNVQKTQPRSALKLYQDLSLLHANELLNLRGWFCHL RNDSHYVVYTRLDGIDRIFIVLNFGESTLLNLHNMISGLPAKMRIRLSTNSADKGSKVDTSGIFLDKGEGLIFEHNTKNLL HRQTAFRDRCFVSNRACYSSVLNILYTSC

靶点信息

研究背景	This gene encodes a type II membrane glycoprotein which is one of the components of the renal amino acid transporter which transports neutral and basic amino acids in the renal tubule and intestinal tract. Mutations and deletions in this gene are associated with cystinuria. Alternatively spliced transcript variants have been described, but their biological validity has not been determined.
------	--

基因ID	6519
基因名	SLC3A1
Swiss	Q07837
别名	SLC3A1;ATR1;CSNU1;D2H;NBAT;RBAT

产品验证



Western blot analysis of SLC3A1 expressed in Mouse liver, HT-29, HepG2 using SLC3A1 Rabbit pAb at 1:1000. Secondary antibody: HRP Goat Anti-Rabbit IgG (H+L) at 1:5000. Lysates/proteins: 30ug per lane. Blocking buffer: 5% non-fat dry milk in TBST. Detection: ECL Enhanced Kit. Exposure time: 120s.

实验步骤

访问官网浏览详情: www.ablybio.cn