

PGE receptor EP4 (PTGER4) Rabbit pAb

货号: AYP15176

产品信息

反应	Rat
宿主	Rabbit
克隆性	Polyclonal
预测反应	
应用	WB
推荐浓度	WB: 1:500 - 1:1000
理论分子量	53kDa
实测分子量	52KDa
形式	Liquid
保存条件	Store at -20°C. Avoid freeze / thaw cycles. Buffer: PBS with 0.05% proclin300,50% glycerol,pH7.3.
偶联物	Unconjugated
阳性对照	Rat spleen
细胞定位	Cell membrane,Multi-pass membrane protein
纯化	Affinity purification

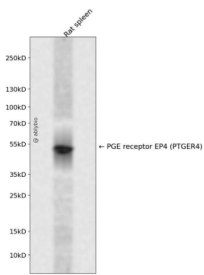
抗原信息

抗原信息	Recombinant fusion protein containing a sequence corresponding to amino acids 1-488 of human PGE receptor EP4 (PTGER4) (P35408).
序列	MSTPGVNSSASLSPDRLNSPVTIPAVMFIGVVGNLVAIVLCKSRKEQKETTFFYTLVCGLAVTDLLGTLVSPVTIATYMKG QWPGGQPLCEYSTFILLFFSLSGLSIIICAMSVRYLAINHAYFYSHYVDKRLAGLTLFAVYASNVLFALPNMGLGSSRLQYP DTWCFIDWTTNVTAAHAASYMYAGFSSFLILATVLCNVLVCGALLRMHRQFMRRTSLGTEQHHAAAAASVASRGHPAAS PALPRLSDFRRRRSFRIAGAEIQMVILLIATSLVVLICSIPLVVRVFNQLYQPSLEREVSKNPDQAIIRIASVNPILDPWIYILL RKTVLSKAIEKIKCLFCRIGGSRRERSGQHCSDSQRTSSAMSGHSRSFISRELKEISSTSQTLLPDLSPDLSENGLGGRNLL PGVPGMGLAQEDTTSLRTLRISETSDSSQGQDSESVLLVDEAGGSGRAGPAPKGSSLQVTFPSETLNLSEKCI

靶点信息

研究背景	The protein encoded by this gene is a member of the G-protein coupled receptor family. This protein is one of four receptors identified for prostaglandin E2 (PGE2). This receptor can activate T-cell factor signaling. It has been shown to mediate PGE2 induced expression of early growth response 1 (EGR1), regulate the level and stability of cyclooxygenase-2 mRNA, and lead to the phosphorylation of glycogen synthase kinase-3. Knockout studies in mice suggest that this receptor may be involved in the neonatal adaptation of circulatory system, osteoporosis, as well as initiation of skin immune responses.
基因ID	5734
基因名	PTGER4
Swiss	P35408
别名	PTGER4;EP4;EP4R

产品验证



Western blot analysis of PGE receptor EP4 (PTGER4) expressed in Rat spleen using PGE receptor EP4 (PTGER4) Rabbit pAb at 1:1000. Secondary antibody: HRP Goat Anti-Rabbit IgG (H+L) at 1:5000. Lysates/proteins: 30ug per lane. Blocking buffer: 5% non-fat dry milk in TBST. Detection: ECL Enhanced Kit. Exposure time: 120s.

实验步骤

访问官网浏览详情: www.ablybio.cn