

SAMM50 Rabbit pAb

货号: **AYP15162**

产品信息

反应	Human,Mouse,Rat
宿主	Rabbit
克隆性	Polyclonal
预测反应	
应用	WB IHC IP
推荐浓度	WB: 1:500 - 1:2000 IHC: 1:50 - 1:200 IP: 1:500 - 1:1000
理论分子量	51kDa
实测分子量	55kDa
形式	Liquid
保存条件	Store at -20°C. Avoid freeze / thaw cycles. Buffer: PBS with 0.02% sodium azide,50% glycerol,pH7.3.
偶联物	Unconjugated
阳性对照	U-251MG,A-431,LO2,HL-60,HT-1080,Mouse eye,Mouse heart
细胞定位	Cytoplasm,Mitochondrion,Mitochondrion outer membrane,Multi-pass membrane protein
纯化	Affinity purification

抗原信息

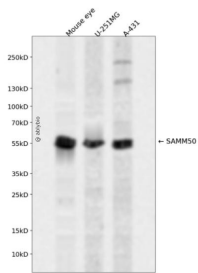
抗原信息	Recombinant fusion protein containing a sequence corresponding to amino acids 1-220 of human SAMM50 (NP_056195.3).
序列	MGTVHARSLEPLSSGPDFGGLGEEAEFVEVEPEAKQEILENKDVVVQHVHFDGLGRTKDDIIICEIGDVFKAKNLIEVMRK SHEAREKLLRLGIFRQVDVLIDTCQGDALPNGLDVTFEVTELRRLTGSYNTMVGNNEGSMVLGLKLPNLLGRAEKVTFQF SYGTKETSYGLSFFKPRPGNFERNFSVNLKYVTGQFPWSSLRETRDRGMSAEYSFPIW

靶点信息

研究背景	This gene encodes a component of the Sorting and Assembly Machinery (SAM) of the mitochondrial outer membrane. The Sam complex functions in the assembly of beta-barrel proteins into the outer mitochondrial membrane.
------	---

基因ID	25813
基因名	SAMM50
Swiss	Q9Y512
别名	SAMM50;CGI-51;OMP85;SAM50;TOB55;TRG-3;YNL026W

产品验证



Western blot analysis of SAMM50 expressed in Mouse eye,U-251MG,A-431 using SAMM50 Rabbit pAb at 1:1000. Secondary antibody: HRP Goat Anti-Rabbit IgG (H+L) at 1:5000. Lysates/proteins: 30ug per lane. Blocking buffer: 5% non-fat dry milk in TBST. Detection: ECL Enhanced Kit. Exposure time: 120s.

实验步骤

访问官网浏览详情: www.ablybio.cn