

PIBF1 Rabbit pAb

货号: **AYP15157**

产品信息

反应	Human,Mouse,Rat
宿主	Rabbit
克隆性	Polyclonal
预测反应	
应用	WB IHC
推荐浓度	WB: 1:500 - 1:1000 IHC: 1:50 - 1:100
理论分子量	12kDa/25kDa/35kDa/89kDa
实测分子量	100kDa
形式	Liquid
保存条件	Store at -20°C. Avoid freeze / thaw cycles. Buffer: PBS with 0.01% thiomersal,50% glycerol,pH7.3.
偶联物	Unconjugated
阳性对照	Mouse heart
细胞定位	Cytoplasm,Nucleus,Secreted,Secreted,centriolar satellite,centrosome,cytoskeleton,microtubule organizing center
纯化	Affinity purification

抗原信息

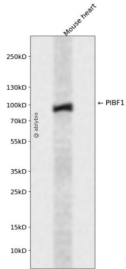
抗原信息	A synthetic peptide corresponding to a sequence within amino acids 1-100 of human PIBF1 (Q8WXW3).
序列	MSRKISKESKKVNISSSELESEDISLETTVPDDISSSEEREGKVRITRQLIERKELLHNIQLLKIELSQKTMIDNLKVDYLTKEELEEKLNDALHQKQ

靶点信息

研究背景	
基因ID	10464
基因名	PIBF1

Swiss	Q8WXW3
别名	PIBF1;C13orf24;CEP90;PIBF

产品验证



Western blot analysis of PIBF1 expressed in Mouse heart using PIBF1 Rabbit pAb at 1:1000. Secondary antibody: HRP Goat Anti-Rabbit IgG (H+L) at 1:5000. Lysates/proteins: 30ug per lane. Blocking buffer: 5% non-fat dry milk in TBST. Detection: ECL Enhanced Kit. Exposure time: 120s.

实验步骤

访问官网浏览详情: www.ablybio.cn