

APOBEC3F Rabbit pAb

货号: **AYP15150**

产品信息

反应	Human,Mouse,Rat
宿主	Rabbit
克隆性	Polyclonal
预测反应	
应用	WB IHC
推荐浓度	WB: 1:500 - 1:2000 IHC: 1:50 - 1:200
理论分子量	9kDa/11kDa/45kDa
实测分子量	45kDa
形式	Liquid
保存条件	Store at -20°C. Avoid freeze / thaw cycles. Buffer: PBS with 0.01% thiomersal,50% glycerol,pH7.3.
偶联物	Unconjugated
阳性对照	HeLa,BxPC-3,HepG2
细胞定位	Cytoplasm,P-body
纯化	Affinity purification

抗原信息

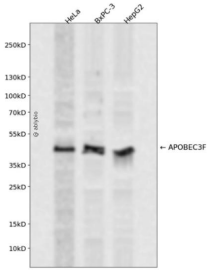
抗原信息	Recombinant fusion protein containing a sequence corresponding to amino acids 1-65 of human APOBEC3F (NP_660341.2).
序列	MKPHFRNTVERMYRDTFSYNFYNRPILSRRTVWLCYEVKTKGPSRPRLDKIFRGQVYSQPEHH

靶点信息

研究背景	This gene is a member of the cytidine deaminase gene family. It is one of seven related genes or pseudo genes found in a cluster, thought to result from gene duplication, on chromosome 22. Members of the cluster encode proteins that are structurally and functionally related to the C to U RNA-editing cytidine deaminase APOBEC1. It is thought that the proteins may be RNA editing enzymes and have roles in growth or cell cycle control. Alternatively spliced transcript variants encoding different isoforms have been identified.
------	---

基因ID	200316
基因名	APOBEC3F
Swiss	Q8IU4
别名	APOBEC3F;A3F;ARP8;BK150C2.4.MRNA;KA6

产品验证



Western blot analysis of APOBEC3F expressed in HeLa, BxPC-3, HepG2 using APOBEC3F Rabbit pAb at 1:1000. Secondary antibody: HRP Goat Anti-Rabbit IgG (H+L) at 1:5000. Lysates/proteins: 30ug per lane. Blocking buffer: 5% non-fat dry milk in TBST. Detection: ECL Enhanced Kit. Exposure time: 120s.

实验步骤

访问官网浏览详情: www.ablybio.cn