

PDE1B Rabbit pAb

货号: **AYP15144**

产品信息

反应	Human,Mouse,Rat
宿主	Rabbit
克隆性	Polyclonal
预测反应	
应用	WB IHC
推荐浓度	WB: 1:500 - 1:2000 IHC: 1:50 - 1:200
理论分子量	59kDa/61kDa
实测分子量	59kDa
形式	Liquid
保存条件	Store at -20°C. Avoid freeze / thaw cycles. Buffer: PBS with 0.02% sodium azide,50% glycerol,pH7.3.
偶联物	Unconjugated
阳性对照	NCI-H460,THP-1,Mouse brain,Mouse spleen,Mouse spinal cord
细胞定位	Cytoplasm
纯化	Affinity purification

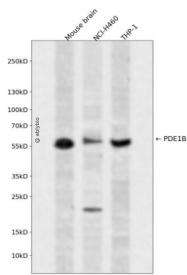
抗原信息

抗原信息	Recombinant fusion protein containing a sequence corresponding to amino acids 190-536 of human PDE1 B (NP_000915.1).
序列	RHNLISRFKIPTVFLMSFLDALETGYGKYKNPYHNQIHAADVDTQTVHCFLLRTGMVHCLSEIELLAIIFAAAIHDYEHTGTTNS FHIQTKSECAIVYNDRSVLENHHISSVFRMLMQDDEMNIIFINLTKDEFVELRALVIEMVLATDMSCHFQQVKMTALQQLER IDKPKALSLLLHAADISHPTKQWLVHSRWTKALMEEFFRQGDKEAELGLPFSPLCDRTSTLVAQSQIGFIDFIVEPTFSVLTD VAEKSVQPLADEDSKSKNQPSFQWRQPSLDVEVGDPNPDVVSFRSTWVKRIQENKQKWKERAASGITNQMSIDELSPC EEEAPPSPAEDEHNQNGNLD

靶点信息

研究背景	The protein encoded by this gene belongs to the cyclic nucleotide phosphodiesterase (PDE) family, and PDE1 subfamily. Members of the PDE1 family are calmodulin-dependent PDEs that are stimulated by a calcium-calmodulin complex. This PDE has dual-specificity for the second messengers, cAMP and cGMP, with a preference for cGMP as a substrate. cAMP and cGMP function as key regulators of many important physiological processes. Alternatively spliced transcript variants encoding different isoforms have been described for this gene.
基因ID	5153
基因名	PDE1B
Swiss	Q01064
别名	PDE1B;HEL-S-79p;PDE1B1;PDES1B

产品验证



Western blot analysis of PDE1B expressed in Mouse brain, NCI-H460, THP-1 using PDE1B Rabbit pAb at 1:1000. Secondary antibody: HRP Goat Anti-Rabbit IgG (H+L) at 1:5000. Lysates/proteins: 30ug per lane. Blocking buffer: 5% non-fat dry milk in TBST. Detection: ECL Enhanced Kit. Exposure time: 120s.

实验步骤

访问官网浏览详情: www.ablybio.cn