

# EXT1 Rabbit pAb

货号: **AYP15141**

## 产品信息

反应	Human,Mouse,Rat
宿主	Rabbit
克隆性	Polyclonal
预测反应	
应用	WB IF/ICC
推荐浓度	<b>WB:</b> 1:500 - 1:2000 <b>IF/ICC:</b> 1:50 - 1:200
理论分子量	86kDa
实测分子量	86kDa
形式	Liquid
保存条件	Store at -20°C. Avoid freeze / thaw cycles. Buffer: PBS with 0.05% proclin300,50% glycerol,pH7.3.
偶联物	Unconjugated
阳性对照	K-562,SW480,PC-3,Mouse liver,Mouse lung
细胞定位	Endoplasmic reticulum membrane,Golgi apparatus membrane,Single-pass type II membrane protein
纯化	Affinity purification

## 抗原信息

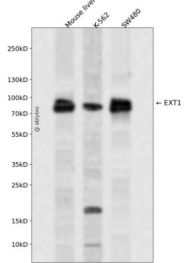
抗原信息	A synthetic peptide corresponding to a sequence within amino acids 600-700 of human EXT1 (NP_000118.2).
序列	DNSKERWGYTSKWTNDYSMLTGAAIYHKYYHYLYSHYLPASLKNMVDQLANCEDILMNFLVSAVTKLPPIKVTQKKQYK ETMMGQTSRASRWADPDHFAQ

## 靶点信息

研究背景	This gene encodes an endoplasmic reticulum-resident type II transmembrane glycosyltransferase involved in the chain elongation step of heparan sulfate biosynthesis. Mutations in this gene cause the type I form of multiple exostoses.
基因ID	2131

基因名	EXT1
Swiss	Q16394
别名	EXT1;EXT;LGCR;LGS;TRPS2;TTV

## 产品验证



Western blot analysis of EXT1 expressed in Mouse liver, K-562, SW480 using EXT1 Rabbit pAb at 1:1000. Secondary antibody: HRP Goat Anti-Rabbit IgG (H+L) at 1:5000. Lysates/proteins: 30ug per lane. Blocking buffer: 5% non-fat dry milk in TBST. Detection: ECL Enhanced Kit. Exposure time: 120s.

## 实验步骤

访问官网浏览详情: [www.ablybio.cn](http://www.ablybio.cn)