

GLO1 Rabbit pAb

货号: **AYP15139**

产品信息

反应	Human,Mouse
宿主	Rabbit
克隆性	Polyclonal
预测反应	
应用	WB IHC IF/ICC
推荐浓度	WB: 1:500 - 1:2000 IHC: 1:50 - 1:200 IF/ICC: 1:50 - 1:200
理论分子量	19kDa/20kDa
实测分子量	21kDa
形式	Liquid
保存条件	Store at -20°C. Avoid freeze / thaw cycles. Buffer: PBS with 0.02% sodium azide,50% glycerol,pH7.3.
偶联物	Unconjugated
阳性对照	BT-474,22Rv1,U-937,PC-3,Mouse kidney
细胞定位	cytoplasm,cytosol,extracellular exosome,nucleoplasm,plasma membrane
纯化	Affinity purification

抗原信息

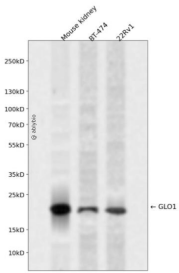
抗原信息	Recombinant fusion protein containing a sequence corresponding to amino acids 1-184 of human GLO1 (NP_006699.2).
序列	MAEPQPPSGGLTDEAALSCCSADPSTKDFLLQQTMLRVKDPKSLDFYTRVLGMTLIQKCDFPIMKFSLYFLAYEDKNDI PKEKDEKIAWALS RKATLELTHNWGTEDEDETQSYHNGNSDPRGFGHIGIAVPDVYSACKRFEELGVKFKPDDGKMKG LAFIQDPDGYWIEILNPNKMATLM

靶点信息

研究背景	The enzyme encoded by this gene is responsible for the catalysis and formation of S-lactoyl-glutathione from methylglyoxal condensation and reduced glutathione. Glyoxalase I is linked to HLA and is localized to 6 p21.3-p21.1, between HLA and the centromere.
------	---

基因ID	2739
基因名	GLO1
Swiss	Q04760
别名	GLO1;GLOD1;GLYI;HEL-S-74

产品验证



Western blot analysis of GLO1 expressed in Mouse kidney, BT-474, 22Rv1 using GLO1 Rabbit pAb at 1:1000. Secondary antibody: HRP Goat Anti-Rabbit IgG (H+L) at 1:5000. Lysates/proteins: 30ug per lane. Blocking buffer: 5% non-fat dry milk in TBST. Detection: ECL Enhanced Kit. Exposure time: 120s.

实验步骤

访问官网浏览详情: www.ablybio.cn