

RFC1 Rabbit pAb

货号: **AYP15129**

产品信息

反应	Human,Mouse,Rat
宿主	Rabbit
克隆性	Polyclonal
预测反应	
应用	WB IF/ICC
推荐浓度	WB: 1:500 - 1:1000 IF/ICC: 1:50 - 1:200
理论分子量	128kDa
实测分子量	140KDa
形式	Liquid
保存条件	Store at -20°C. Avoid freeze / thaw cycles. Buffer: PBS with 0.05% proclin300,50% glycerol,pH7.3.
偶联物	Unconjugated
阳性对照	HeLa,Mouse liver,Mouse brain
细胞定位	Nucleus
纯化	Affinity purification

抗原信息

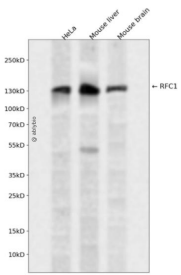
抗原信息	A synthetic peptide corresponding to a sequence within amino acids 450-550 of human RFC1 (NP_001191676.1).
序列	MGRDSGQSKSDKAAALGTKIIDEDGLLNLI RTMPGKKS KYEIAVETEMKKESKLERTPQKNVQGKRKISPSKKESESKSR PTSKRDSLAKTIKKETDVFVW

靶点信息

研究背景	This gene encodes the large subunit of replication factor C, a five subunit DNA polymerase accessory protein, which is a DNA-dependent ATPase required for eukaryotic DNA replication and repair. The large subunit acts as an activator of DNA polymerases, binds to the 3' end of primers, and promotes coordinated synthesis of both strands. It may also have a role in telomere stability. Alternatively spliced transcript variants encoding different isoforms have been noted for this gene.
------	--

基因ID	5981
基因名	RFC1
Swiss	P35251
别名	RFC1;A1;MHCBBF;PO-GA;RECC1;RFC;RFC140

产品验证



Western blot analysis of RFC1 expressed in HeLa, Mouse liver, Mouse brain using RFC1 Rabbit pAb at 1:1000. Secondary antibody: HRP Goat Anti-Rabbit IgG (H+L) at 1:5000. Lysates/proteins: 30ug per lane. Blocking buffer: 5% non-fat dry milk in TBST. Detection: ECL Enhanced Kit. Exposure time: 120s.

实验步骤

访问官网浏览详情: www.ablybio.cn