

# TLE4 Rabbit pAb

货号: **AYP15114**

## 产品信息

反应	Rat
宿主	Rabbit
克隆性	Polyclonal
预测反应	
应用	WB
推荐浓度	<b>WB:</b> 1:500 - 1:2000
理论分子量	84kDa
实测分子量	84kDa
形式	Liquid
保存条件	Store at -20°C. Avoid freeze / thaw cycles. Buffer: PBS with 0.01% thiomersal,50% glycerol,pH7.3.
偶联物	Unconjugated
阳性对照	Rat lung
细胞定位	nucleoplasm,nucleus
纯化	Affinity purification

## 抗原信息

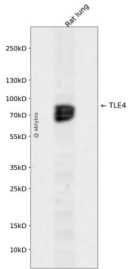
抗原信息	Recombinant fusion protein containing a sequence corresponding to amino acids 173-243 of human TLE4 (NP_001269677).
序列	SSALGGQSHLPIKDEKKHHDNDHQRDRDSIKSSSVSPSASFRGAEKHRNSADYSSESKKQKTEEKEIAARY

## 靶点信息

研究背景	Transcriptional corepressor that binds to a number of transcription factors. Inhibits the transcriptional activation mediated by PAX5, and by CTNNB1 and TCF family members in Wnt signaling. The effects of full-length TLE family members may be modulated by association with dominant-negative AES. Essential for the transcriptional repressor activity of SIX3 during retina and lens development and for SIX3 transcriptional auto-repression (By similarity).
基因ID	7091

基因名	TLE4
Swiss	Q04727
别名	ESG;BCE1;ESG4;GRG4;BCE-1;Grg-4;E(spl);E(spl);TLE4

## 产品验证



Western blot analysis of TLE4 expressed in Rat lung using TLE4 Rabbit pAb at 1:1000. Secondary antibody : HRP Goat Anti-Rabbit IgG (H+L) at 1:5000. Lysates/proteins: 30ug per lane. Blocking buffer: 5% non-fat dry milk in TBST. Detection: ECL Enhanced Kit. Exposure time: 120s.

## 实验步骤

访问官网浏览详情: [www.ablybio.cn](http://www.ablybio.cn)