

C1R Rabbit pAb

货号: **AYP15108**

产品信息

反应	Human,Mouse,Rat
宿主	Rabbit
克隆性	Polyclonal
预测反应	
应用	WB
推荐浓度	WB: 1:500 - 1:2000
理论分子量	80kDa
实测分子量	80kDa
形式	Liquid
保存条件	Store at -20°C. Avoid freeze / thaw cycles. Buffer: PBS with 0.01% thiomersal,50% glycerol,pH7.3.
偶联物	Unconjugated
阳性对照	HT-29,Mouse liver,Rat lung
细胞定位	blood microparticle,complement component C1 complex,extracellular exosome,extracellular region,extra cellular space
纯化	Affinity purification

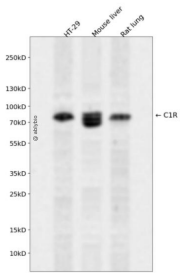
抗原信息

抗原信息	Recombinant fusion protein containing a sequence corresponding to amino acids 466-705 of human C1R (NP_001724.3).
序列	GGQKAKMGNFPWQVFTNIHGRGGGALLGDRWILTAHTLYPKEHEAQSNASLDVFLGHTNVEELMKLGNHPIRRVSVHP DYRQDESYNFEGDIALLELENSVTLGPNLLPICLPDNDTFYDLGLMGYVSGFGVMEEKIAHDLRFVRLPVANPQACENWLR GKNRMDVFSQNMFCAGHPSLKQDACQGDSGGVFAVRDPNTDRWVATGIVSWGIGCSRGYGFYTKVLNYYVDWIKKEM EEED

靶点信息

研究背景	The classical complement pathway plays a major role in innate immunity against infection. This pathway is triggered by C1, a multimolecular complex composed of the recognition protein C1q and two serine proteases, C1r and C1s. Following the C1q recognition, C1r is autoactivated, and in turn activates C1s, which cleaves C4 and C2, the C1 substrates. C1r acts by transforming the activation signal into an enzymic activity. C1r is a single-chain glycoprotein which can be cleaved into an A chain and a B chain upon activation. This protein recognizes full-length C1r chain and the cleaved B chain.
基因ID	715
基因名	C1R
Swiss	P00736
别名	C1R;EDSPD1

产品验证



Western blot analysis of C1R expressed in HT-29, Mouse liver, Rat lung using C1R Rabbit pAb at 1:1000. Secondary antibody: HRP Goat Anti-Rabbit IgG (H+L) at 1:5000. Lysates/proteins: 30ug per lane. Blocking buffer: 5% non-fat dry milk in TBST. Detection: ECL Enhanced Kit. Exposure time: 120s.

实验步骤

访问官网浏览详情: www.ablybio.cn