

# Phospho-eIF4EBP1-T36 Rabbit pAb

货号: **AYP15091**

## 产品信息

反应	Human,Mouse,Rat
宿主	Rabbit
克隆性	Polyclonal
预测反应	
应用	WB
推荐浓度	<b>WB:</b> 1:500 - 1:2000 <b>IHC:</b> 1:50 - 1:100
理论分子量	12kDa
实测分子量	20kDa
形式	Liquid
保存条件	Store at -20°C. Avoid freeze / thaw cycles. Buffer: PBS with 0.01% thiomersal,50% glycerol,pH7.3.
偶联物	Unconjugated
阳性对照	MDA-MB-435
细胞定位	cytoplasm,cytosol
纯化	Affinity purification

## 抗原信息

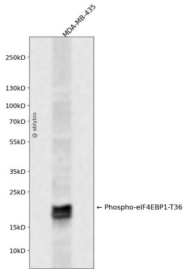
抗原信息	A synthetic phosphorylated peptide around T36 of human eIF4EBP1 (NP_004086.1).
序列	YSTTP

## 靶点信息

研究背景	This gene encodes one member of a family of translation repressor proteins. The protein directly interact s with eukaryotic translation initiation factor 4E (eIF4E), which is a limiting component of the multisubunit complex that recruits 40S ribosomal subunits to the 5' end of mRNAs. Interaction of this protein with eIF4 E inhibits complex assembly and represses translation. This protein is phosphorylated in response to vari ous signals including UV irradiation and insulin signaling, resulting in its dissociation from eIF4E and activ ation of mRNA translation.
基因ID	1978

基因名	EIF4EBP1
Swiss	Q13541
别名	4E-BP1;4EBP1;BP-1;PHAS-I;EIF4EBP1

## 产品验证



Western blot analysis of Phospho-eIF4EBP1-T36 expressed in MDA-MB-435 using Phospho-eIF4EBP1-T36 Rabbit pAb at 1:1000. Secondary antibody: HRP Goat Anti-Rabbit IgG (H+L) at 1:5000. Lysates/proteins: 30ug per lane. Blocking buffer: 5% non-fat dry milk in TBST. Detection: ECL Enhanced Kit. Exposure time: 120s.

## 实验步骤

访问官网浏览详情: [www.ablybio.cn](http://www.ablybio.cn)