

Phospho-G3BP1-S232 Rabbit pAb

货号: **AYP15090**

产品信息

反应	Human
宿主	Rabbit
克隆性	Polyclonal
预测反应	
应用	WB IHC IF/ICC
推荐浓度	WB: 1:500 - 1:2000 IHC: 1:50 - 1:100 IF/ICC: 1:100 - 1:200
理论分子量	13kDa/52kDa
实测分子量	52kDa
形式	Liquid
保存条件	Store at -20°C. Avoid freeze / thaw cycles. Buffer: PBS with 0.02% sodium azide,50% glycerol,pH7.3.
偶联物	Unconjugated
阳性对照	293
细胞定位	Cell membrane,Cytoplasm,Cytoplasmic granule,Nucleus,cytosol
纯化	Affinity purification

抗原信息

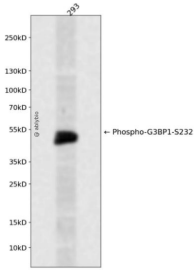
抗原信息	A phospho specific peptide corresponding to residues surrounding S232 of human Phospho-G3BP1-S232
序列	

靶点信息

研究背景	This gene encodes one of the DNA-unwinding enzymes which prefers partially unwound 3'-tailed substrates and can also unwind partial RNA/DNA and RNA/RNA duplexes in an ATP-dependent fashion. This enzyme is a member of the heterogeneous nuclear RNA-binding proteins and is also an element of the Ras signal transduction pathway. It binds specifically to the Ras-GTPase-activating protein by associating with its SH3 domain. Several alternatively spliced transcript variants of this gene have been described, but the full-length nature of some of these variants has not been determined.
------	---

基因ID	10146
基因名	G3BP1
Swiss	Q13283
别名	G3BP1;G3BP;HDH-VIII

产品验证



Western blot analysis of Phospho-G3BP1-S232 expressed in 293 using Phospho-G3BP1-S232 Rabbit pAb at 1:1000. Secondary antibody: HRP Goat Anti-Rabbit IgG (H+L) at 1:5000. Lysates/proteins: 30ug per lane. Blocking buffer: 5% non-fat dry milk in TBST. Detection: ECL Enhanced Kit. Exposure time: 120 S.

实验步骤

访问官网浏览详情: www.ablybio.cn