

Phospho-GATA1-S310 Rabbit pAb

货号: **AYP15088**

产品信息

反应	Human,Mouse,Rat
宿主	Rabbit
克隆性	Polyclonal
预测反应	
应用	WB IF/ICC
推荐浓度	WB: 1:500 - 1:2000 IF/ICC: 1:100 - 1:200
理论分子量	34kDa/35kDa/42kDa
实测分子量	43kDa
形式	Liquid
保存条件	Store at -20°C. Avoid freeze / thaw cycles. Buffer: PBS with 0.02% sodium azide,50% glycerol,pH7.3.
偶联物	Unconjugated
阳性对照	K-562
细胞定位	Nucleus
纯化	Affinity purification

抗原信息

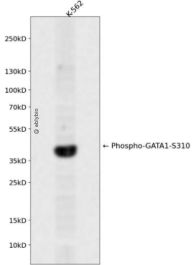
抗原信息	A phospho specific peptide corresponding to residues surrounding S310 of human GATA1
序列	

靶点信息

研究背景	This gene encodes a protein which belongs to the GATA family of transcription factors. The protein plays an important role in erythroid development by regulating the switch of fetal hemoglobin to adult hemoglobin. Mutations in this gene have been associated with X-linked dyserythropoietic anemia and thrombocytopenia.
基因ID	2623

基因名	GATA1
Swiss	P15976
别名	GATA1;ERYF1;GATA-1;GF-1;GF1;NF-E1;NFE1;XLANP;XLTDA;XLTT

产品验证



Western blot analysis of Phospho-GATA1-S310 expressed in K-562 using Phospho-GATA1-S310 Rabbit pAb at 1:1000. Secondary antibody: HRP Goat Anti-Rabbit IgG (H+L) at 1:5000. Lysates/proteins: 30ug per lane. Blocking buffer: 5% non-fat dry milk in TBST. Detection: ECL Enhanced Kit. Exposure time: 12 0s.

实验步骤

访问官网浏览详情: www.ablybio.cn