

Phospho-Connexin 43-S368 Rabbit pAb

货号: **AYP15086**

产品信息

反应	Human,Mouse,Rat
宿主	Rabbit
克隆性	Polyclonal
预测反应	
应用	WB IHC
推荐浓度	WB: 1:500 - 1:1000 IHC: 1:50 - 1:100
理论分子量	43kDa
实测分子量	35KDa
形式	Liquid
保存条件	Store at -20°C. Avoid freeze / thaw cycles. Buffer: PBS with 0.01% thiomersal,50% glycerol,pH7.3.
偶联物	Unconjugated
阳性对照	HeLa,NIH/3T3
细胞定位	Cell junction,Cell membrane,Endoplasmic reticulum,Multi-pass membrane protein,gap junction
纯化	Affinity purification

抗原信息

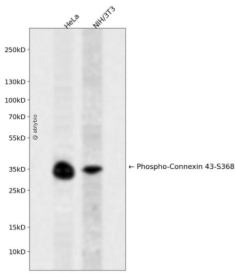
抗原信息	A synthetic phosphorylated peptide around S368 of human GJA1 (NP_000156.1).
序列	RASSR

靶点信息

研究背景	This gene is a member of the connexin gene family. The encoded protein is a component of gap junctions , which are composed of arrays of intercellular channels that provide a route for the diffusion of low molecular weight materials from cell to cell. The encoded protein is the major protein of gap junctions in the heart that are thought to have a crucial role in the synchronized contraction of the heart and in embryonic development. A related intronless pseudogene has been mapped to chromosome 5. Mutations in this gene have been associated with oculodentodigital dysplasia, autosomal recessive craniometaphyseal dysplasia and heart malformations.
------	---

基因ID	2697
基因名	GJA1
Swiss	P17302
别名	GJA1;AVSD3;CMDR;CX43;EKVP;GJAL;HLHS1;HSS;ODDD;PPKCA;EKVP3

产品验证



Western blot analysis of Phospho-Connexin 43-S368 expressed in HeLa,NIH/3T3 using Phospho-Connexin 43-S368 Rabbit pAb at 1:1000. Secondary antibody: HRP Goat Anti-Rabbit IgG (H+L) at 1:5000. Lysates/proteins: 30ug per lane. Blocking buffer: 5% non-fat dry milk in TBST. Detection: ECL Enhanced Kit. Exposure time: 120s.

实验步骤

访问官网浏览详情: www.ablybio.cn