

Phospho-MEK6-S207 Rabbit pAb

货号: AYP15076

产品信息

反应	Human,Rat
宿主	Rabbit
克隆性	Polyclonal
预测反应	
应用	WB IHC IF/ICC
推荐浓度	WB: 1:500 - 1:1000 IHC: 1:50 - 1:100 IF/ICC: 1:50 - 1:200
理论分子量	31kDa/37kDa
实测分子量	43kDa
形式	Liquid
保存条件	Store at -20°C. Avoid freeze / thaw cycles. Buffer: PBS with 0.02% sodium azide,50% glycerol,pH7.3.
偶联物	Unconjugated
阳性对照	HL-60
细胞定位	Cytoplasm,Nucleus,cytoskeleton
纯化	Affinity purification

抗原信息

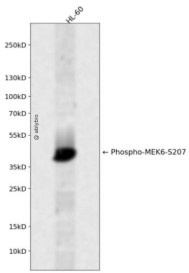
抗原信息	A phospho specific peptide corresponding to residues surrounding S207 of human MAP2K6
序列	

靶点信息

研究背景	This gene encodes a member of the dual specificity protein kinase family, which functions as a mitogen-activated protein (MAP) kinase kinase. MAP kinases, also known as extracellular signal-regulated kinases (ERKs), act as an integration point for multiple biochemical signals. This protein phosphorylates and activates p38 MAP kinase in response to inflammatory cytokines or environmental stress. As an essential component of p38 MAP kinase mediated signal transduction pathway, this gene is involved in many cellular processes such as stress induced cell cycle arrest, transcription activation and apoptosis.
------	--

基因ID	5608
基因名	MAP2K6
Swiss	P52564
别名	MAP2K6;MAPKK6;MEK6;MKK6;PRKMK6;SAPKK-3;SAPKK3

产品验证



Western blot analysis of Phospho-MEK6-S207 expressed in HL-60 using Phospho-MEK6-S207 Rabbit pAb at 1:1000. Secondary antibody: HRP Goat Anti-Rabbit IgG (H+L) at 1:5000. Lysates/proteins: 30ug per lane. Blocking buffer: 5% non-fat dry milk in TBST. Detection: ECL Enhanced Kit. Exposure time: 120s.

实验步骤

访问官网浏览详情: www.ablybio.cn