

Phospho-SRC Family-Y416 Rabbit pAb

货号: **AYP15058**

产品信息

反应	Human
宿主	Rabbit
克隆性	Polyclonal
预测反应	
应用	WB IP
推荐浓度	WB: 1:500 - 1:1000 IP: 1:50 - 1:100
理论分子量	40kDa/58kDa/61kDa/54kDa/60kDa
实测分子量	56KDa
形式	Liquid
保存条件	Store at -20°C. Avoid freeze / thaw cycles. Buffer: PBS with 0.02% sodium azide,50% glycerol,pH7.3.
偶联物	Unconjugated
阳性对照	Jurkat
细胞定位	cytosol,dendrite,endosome,glial cell projection,mitochondrion,nucleus,perikaryon,perinuclear endoplasmic reticulum,perinuclear region of cytoplasm,plasma membrane,postsynaptic density,Schaffer collateral - CA1 synapse
纯化	Affinity purification

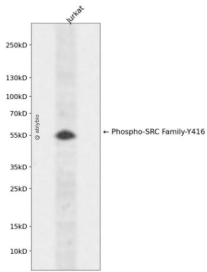
抗原信息

抗原信息	A synthetic phosphorylated peptide around Y416 of human SRC FamilySRC (NP_005408.1).
序列	NEYTA

靶点信息

研究背景	This gene is a member of the Src family of protein tyrosine kinases (PTKs). The encoded protein is a key signaling molecule in the selection and maturation of developing T-cells. It contains N-terminal sites for myristylation and palmitoylation, a PTK domain, and SH2 and SH3 domains which are involved in mediating protein-protein interactions with phosphotyrosine-containing and proline-rich motifs, respectively. The protein localizes to the plasma membrane and pericentrosomal vesicles, and binds to cell surface receptors, including CD4 and CD8, and other signaling molecules. Multiple alternatively spliced variants encoding different isoforms have been described. [provided by RefSeq, Aug 2016]
基因ID	2534,3055,3932,4067,6714,7525
基因名	FYN,HCK,LCK,LYN,SRC,YES1
Swiss	P06241,P08631,P06239,P07948,P12931,P07947
别名	ASV;SRC1;THC6;c-SRC;p60-Src;SRC

产品验证



Western blot analysis of Phospho-SRC Family-Y416 expressed in Jurkat using Phospho-SRC Family-Y416 Rabbit pAb at 1:1000. Secondary antibody: HRP Goat Anti-Rabbit IgG (H+L) at 1:5000. Lysates/proteins: 30ug per lane. Blocking buffer: 5% non-fat dry milk in TBST. Detection: ECL Enhanced Kit. Exposure time: 120s.

实验步骤

访问官网浏览详情: www.ablybio.cn