

Phospho-PKC (pan) (β II Ser660) Rabbit pAb

货号: AYP15055

产品信息

反应	Human,Mouse,Rat
宿主	Rabbit
克隆性	Polyclonal
预测反应	
应用	WB
推荐浓度	WB: 1:500 - 1:2000
理论分子量	59kDa/67kDa/74- 83kDa
实测分子量	95kDa
形式	Liquid
保存条件	Store at -20°C. Avoid freeze / thaw cycles. Buffer: PBS with 0.02% sodium azide,50% glycerol,pH7.3.
偶联物	Unconjugated
阳性对照	293T,293T+PMA
细胞定位	cytoplasm,cytosol,endoplasmic reticulum,extracellular exosome,mitochondrial membrane,mitochondrion, nucleoplasm,perinuclear region of cytoplasm,plasma membrane
纯化	Affinity purification

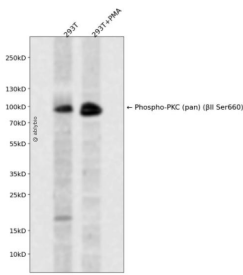
抗原信息

抗原信息	A synthetic phosphorylated peptide around S660 of human PKC (pan) β IIPKCA (NP_002728.2).
序列	YVNPQ

靶点信息

研究背景	Protein kinase C (PKC) is a family of serine- and threonine-specific protein kinases that can be activated by calcium and the second messenger diacylglycerol. PKC family members phosphorylate a wide variety of protein targets and are known to be involved in diverse cellular signaling pathways. PKC family members also serve as major receptors for phorbol esters, a class of tumor promoters. Each member of the PKC family has a specific expression profile and is believed to play a distinct role in cells. The protein encoded by this gene is one of the PKC family members. This kinase has been reported to play roles in many different cellular processes, such as cell adhesion, cell transformation, cell cycle checkpoint, and cell volume control. Knockout studies in mice suggest that this kinase may be a fundamental regulator of cardiac contractility and Ca(2+) handling in myocytes. [provided by RefSeq, Jul 2008]
基因ID	5578,5579,5580,5581,5583,5588
基因名	PRKCA,PRKCB,PRKCD,PRKCE,PRKCH,PRKCQ
Swiss	P17252,P05771,Q05655,Q02156,P24723,Q04759
别名	PRKCA/PRKCB/PRKCD/PRKCE/PRKCH/PRKCQ

产品验证



Western blot analysis of Phospho-PKC (pan) (β II Ser660) expressed in 293T,293T+PMA using Phospho-PKC (pan) (β II Ser660) Rabbit pAb at 1:1000. Secondary antibody: HRP Goat Anti-Rabbit IgG (H+L) at 1:5000. Lysates/proteins: 30ug per lane. Blocking buffer: 5% non-fat dry milk in TBST. Detection: ECL Enhanced Kit. Exposure time: 120s.

实验步骤

访问官网浏览详情: www.ablybio.cn