

Phospho-IRS1-S612 Rabbit pAb

货号: **AYP15047**

产品信息

反应	Human,Mouse,Rat
宿主	Rabbit
克隆性	Polyclonal
预测反应	
应用	WB IHC
推荐浓度	WB: 1:500 - 1:1000 IHC: 1:50 - 1:200
理论分子量	131kDa
实测分子量	180KDa
形式	Liquid
保存条件	Store at -20°C. Avoid freeze / thaw cycles. Buffer: PBS with 0.02% sodium azide,50% glycerol,pH7.3.
偶联物	Unconjugated
阳性对照	C2C12
细胞定位	caveola,cytoplasm,cytosol,nucleoplasm,nucleus,plasma membrane
纯化	Affinity purification

抗原信息

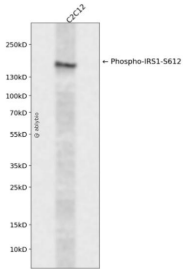
抗原信息	A synthetic phosphorylated peptide around S612 of human IRS1 (NP_005535.1).
序列	PMSPG

靶点信息

研究背景	This gene encodes a protein which is phosphorylated by insulin receptor tyrosine kinase. Mutations in this gene are associated with type II diabetes and susceptibility to insulin resistance.
基因ID	3667
基因名	IRS1

Swiss	P35568
别名	HIRS-1;IRS1

产品验证



Western blot analysis of Phospho-IRS1-S612 expressed in C2C12 using Phospho-IRS1-S612 Rabbit pAb at 1:1000. Secondary antibody: HRP Goat Anti-Rabbit IgG (H+L) at 1:5000. Lysates/proteins: 30ug per lane. Blocking buffer: 5% non-fat dry milk in TBST. Detection: ECL Enhanced Kit. Exposure time: 120s.

实验步骤

访问官网浏览详情: www.ablybio.cn