

Phospho-PKC δ / θ -S643/676 Rabbit pAb

货号: **AYP15044**

产品信息

反应	Human,Mouse
宿主	Rabbit
克隆性	Polyclonal
预测反应	
应用	WB
推荐浓度	WB: 1:500 - 1:2000
理论分子量	77kDa/80kDa/67kDa/74kDa/81kDa
实测分子量	78kDa
形式	Liquid
保存条件	Store at -20°C. Avoid freeze / thaw cycles. Buffer: PBS with 0.02% sodium azide,50% glycerol,pH7.3.
偶联物	Unconjugated
阳性对照	RAW264.7
细胞定位	cell-cell junction,cytoplasm,cytosol,endolysosome,endoplasmic reticulum,extracellular exosome,extracellular region,mitochondrion,nuclear matrix,nucleoplasm,nucleus,perinuclear region of cytoplasm,plasma membrane
纯化	Affinity purification

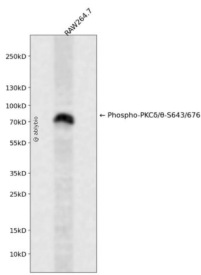
抗原信息

抗原信息	A synthetic phosphorylated peptide around S643 of human PKC δ / θ PRKCD (NP_001341605.1).
序列	RLSYS

靶点信息

研究背景	Protein kinase C (PKC) is a family of serine- and threonine-specific protein kinases that can be activated by calcium and the second messenger diacylglycerol. PKC family members phosphorylate a wide variety of protein targets and are known to be involved in diverse cellular signaling pathways. PKC family members also serve as major receptors for phorbol esters, a class of tumor promoters. Each member of the PKC family has a specific expression profile and is believed to play distinct roles in cells. The protein encoded by this gene is one of the PKC family members. Studies both in human and mice demonstrate that this kinase is involved in B cell signaling and in the regulation of growth, apoptosis, and differentiation of a variety of cell types. Alternatively spliced transcript variants encoding the same protein have been observed. [provided by RefSeq, Jul 2008]
基因ID	5580,5588
基因名	PRKCD,PRKCQ
Swiss	Q05655,Q04759
别名	PRKCD/PRKCQ

产品验证



Western blot analysis of Phospho-PKC δ/θ -S643/676 expressed in RAW264.7 using Phospho-PKC δ/θ -S643/676 Rabbit pAb at 1:1000. Secondary antibody: HRP Goat Anti-Rabbit IgG (H+L) at 1:5000. Lysates /proteins: 30ug per lane. Blocking buffer: 5% non-fat dry milk in TBST. Detection: ECL Enhanced Kit. Exposure time: 120s.

实验步骤

访问官网浏览详情: www.ablybio.cn