

SLC17A1 Rabbit pAb

货号: **AYP14987**

产品信息

反应	Rat
宿主	Rabbit
克隆性	Polyclonal
预测反应	WB: Mouse Monocyte Macrophage Leukemia Cells
应用	WB
推荐浓度	WB: 1:500 - 1:1000
理论分子量	44kDa/51kDa
实测分子量	51KDa
形式	Liquid
保存条件	Store at -20°C. Avoid freeze / thaw cycles. Buffer: PBS with 0.01% thiomersal,50% glycerol,pH7.3.
偶联物	Unconjugated
阳性对照	Rat liver
细胞定位	apical plasma membrane,lysosome,plasma membrane
纯化	Affinity purification

抗原信息

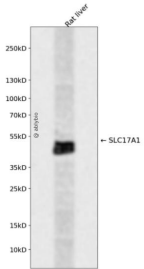
抗原信息	A synthetic peptide corresponding to a sequence within amino acids 1-100 of human SLC17A1 (NP_005065.2).
序列	MQMDNRLPPKKVPGFCSFRYGLSFLVHCCNVIITAQRACLNLTMVVMVNSTDPHGLPNTSTKLLDNIKNPMYNWSPDIQGIILSSTS YGVIIIQVPVGY

靶点信息

研究背景	Important for the resorption of phosphate by the kidney. May be involved in actively transporting phosphate into cells via Na(+ cotransport in the renal brush border membrane. Plays a role in urate transport in the kidney.
基因ID	6568

基因名	SLC17A1
Swiss	Q14916
别名	SLC17A1;NAPI-1;NPT-1;NPT1

产品验证



Western blot analysis of SLC17A1 expressed in Rat liver using SLC17A1 Rabbit pAb at 1:1000. Secondary antibody: HRP Goat Anti-Rabbit IgG (H+L) at 1:5000. Lysates/proteins: 30ug per lane. Blocking buffer: 5% non-fat dry milk in TBST. Detection: ECL Enhanced Kit. Exposure time: 120s.

实验步骤

访问官网浏览详情: www.ablybio.cn