

— ABLYBIO, Help Your Research



IGF1 Rabbit pAb

货号: **AYP14981**

产品信息

反应	Human,Mouse,Rat
宿主	Rabbit
克隆性	Polyclonal
预测反应	WB: H9c2
应用	WB IHC
推荐浓度	WB: 1:500 - 1:2000 IHC: 1:50 - 1:200
理论分子量	15kDa/17kDa/21kDa
实测分子量	18KDa
形式	Liquid
保存条件	Store at -20°C. Avoid freeze / thaw cycles. Buffer: PBS with 0.05% proclin300,50% glycerol,pH7.3.
偶联物	Unconjugated
阳性对照	HeLa,Mouse testis
细胞定位	Secreted
纯化	Affinity purification

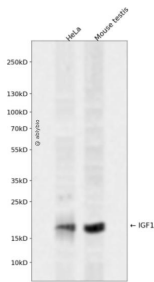
抗原信息

抗原信息	A synthetic peptide corresponding to a sequence within amino acids 50-150 of human IGF1 (NP_000609.1).
------	--

靶点信息

研究背景	The protein encoded by this gene is similar to insulin in function and structure and is a member of a family of proteins involved in mediating growth and development. The encoded protein is processed from a precursor, bound by a specific receptor, and secreted. Defects in this gene are a cause of insulin-like growth factor I deficiency. Alternative splicing results in multiple transcript variants encoding different isoforms that may undergo similar processing to generate mature protein.
基因ID	3479
基因名	IGF1
Swiss	P05019 (https://www.uniprot.org/uniprotkb/P05019/entry)
别名	IGF1,IGF-I,IGFI,MGF,IGF1 Rabbit pAb,Insulin-like growth factor I,Mechano growth factor,Somatomedin-C,IBP1,IGF-1

产品验证



Western blot analysis of IGF1 expressed in HeLa, Mouse testis using IGF1 Rabbit pAb at 1:1000. Secondary antibody: HRP Goat Anti-Rabbit IgG (H+L) at 1:5000. Lysates/proteins: 30ug per lane. Blocking buffer: 5% non-fat dry milk in TBST. Detection: ECL Enhanced Kit. Exposure time: 120s.

实验步骤

访问官网浏览详情: www.ablybio.cn (<https://www.ablybio.cn/www.ablybio.cn>)