

# RAB2A Rabbit pAb

货号: **AYP14973**

## 产品信息

反应	Human,Mouse,Rat
宿主	Rabbit
克隆性	Polyclonal
预测反应	<b>WB:</b> Mouse Monocyte Macrophage Leukemia Cells
应用	<a href="#">WB</a>
推荐浓度	<b>WB:</b> 1:1000 - 1:5000
理论分子量	20kDa/23kDa
实测分子量	23kDa
形式	Liquid
保存条件	Store at -20°C. Avoid freeze / thaw cycles. Buffer: PBS with 0.01% thiomersal,50% glycerol,pH7.3.
偶联物	Unconjugated
阳性对照	U-87MG,HeLa,HT-29,A-549,Mouse Testis,Rat Brain
细胞定位	Endoplasmic reticulum membrane,Endoplasmic reticulum-Golgi intermediate compartment membrane,Golgi apparatus membrane,Lipid-anchor,Melanosome
纯化	Affinity purification

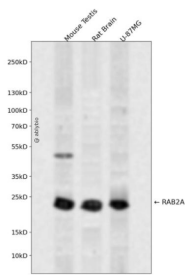
## 抗原信息

抗原信息	Recombinant fusion protein containing a sequence corresponding to amino acids 1-212 of human RAB2A (NP_002856.1).
序列	MAYAYLFKYIIIGDTGVGKSCLLQFTDKRFQPVHDLTIGVEFGARMITIDGKQIKLQIWDTAGQESFRSITRSYYRGAAGAL LVYDITRRDFTFNHLTTWLEDARQHSNSNMVIMLIGNKSDLESRRVKKEEGEAFAREHGLIFMETSAKTASNVEEAFINTAK EIEYKIQEGVFDINNEANGIKIGPQHAATNATHAGNQGGQQAGGGCC

## 靶点信息

研究背景	The protein encoded by this gene belongs to the Rab family, members of which are small molecular weight guanosine triphosphatases (GTPases) that contain highly conserved domains involved in GTP binding and hydrolysis. The Rabs are membrane-bound proteins, involved in vesicular fusion and trafficking. This protein is a resident of pre-Golgi intermediates, and is required for protein transport from the endoplasmic reticulum (ER) to the Golgi complex. Alternatively spliced transcript variants encoding different isoforms have been found for this gene.
基因ID	5862
基因名	RAB2A
Swiss	P61019
别名	RAB2A;LHX;RAB2

## 产品验证



Western blot analysis of RAB2A expressed in Mouse Testis,Rat Brain,U-87MG using RAB2A Rabbit pAb at 1:1000. Secondary antibody: HRP Goat Anti-Rabbit IgG (H+L) at 1:5000. Lysates/proteins: 30ug per lane. Blocking buffer: 5% non-fat dry milk in TBST. Detection: ECL Enhanced Kit. Exposure time: 120s.

## 实验步骤

访问官网浏览详情: [www.ablybio.cn](http://www.ablybio.cn)